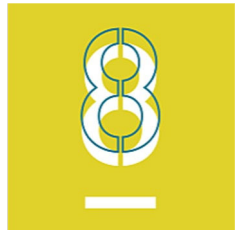




Sepasoft Fundamentals.

Ignition-built MES



About Sepasoft, Inc

- Built from in the field based needs
- Started MES in 2010
- Inductive Automation Strategic Partner
- 1,000+ implementations worldwide
- More than 170+ MES-Certified System Integrators globally
- 8 Distributors in foreign countries
- 100% MES Focus
- Pre and Post sales dedicated support
- Dedicated growing sales team focused on MES



What we do

Sepasoft provides MES solutions used to control, track, and document the transformation of raw materials to finished goods in real-time.





Licensing Model

- Perpetual Licensing
- No nonsense licensing
 - Unlimited Machines per site/server
 - Unlimited Lines per site/server
- All costs revealed up front





Support



PriorityCare

PriorityCare is our new premium support offering, providing unlimited phone, and web support at our highest priority level during business hours, as well as free software upgrades and member discounts.

+ 24% Annually | Support plan price is based on the retail price of software at the time of purchase.

PriorityCare includes:

- Unlimited phone, web portal support at our highest priority level (Includes phone support during business hours; priority level may be affected by the severity of the issue.)
- Upgrade Protection: Unlimited free upgrades to any modules purchased
- 15% discounts on training courses, excluding onsite training
- Free certification tests

TotalCare

Get peace of mind for the entire year with unlimited phone, and web portal access to our technical support reps, free software upgrades, and member discounts.

+ 20% Annually | Support plan price is based on the retail price of software at the time of purchase.

Total Care includes:

- Unlimited phone (during business hours), and web portal support
- Upgrade Protection: Unlimited free upgrades to any modules purchased
- 10% off training courses, excluding onsite training
- Half-price certification tests





Quick Start Program



Overview

Manufacturing Execution System (MES) implementations bridge higher-level planning systems with plant floor control systems. Typically, this system will involve many departments and personas, in addition to accommodating existing processes. The end result makes MES one of the most challenging systems to successfully implement. The Sepasoft Quick Start Program (QSP) helps our end users identify and mitigate common risk factors associated with MES implementation.





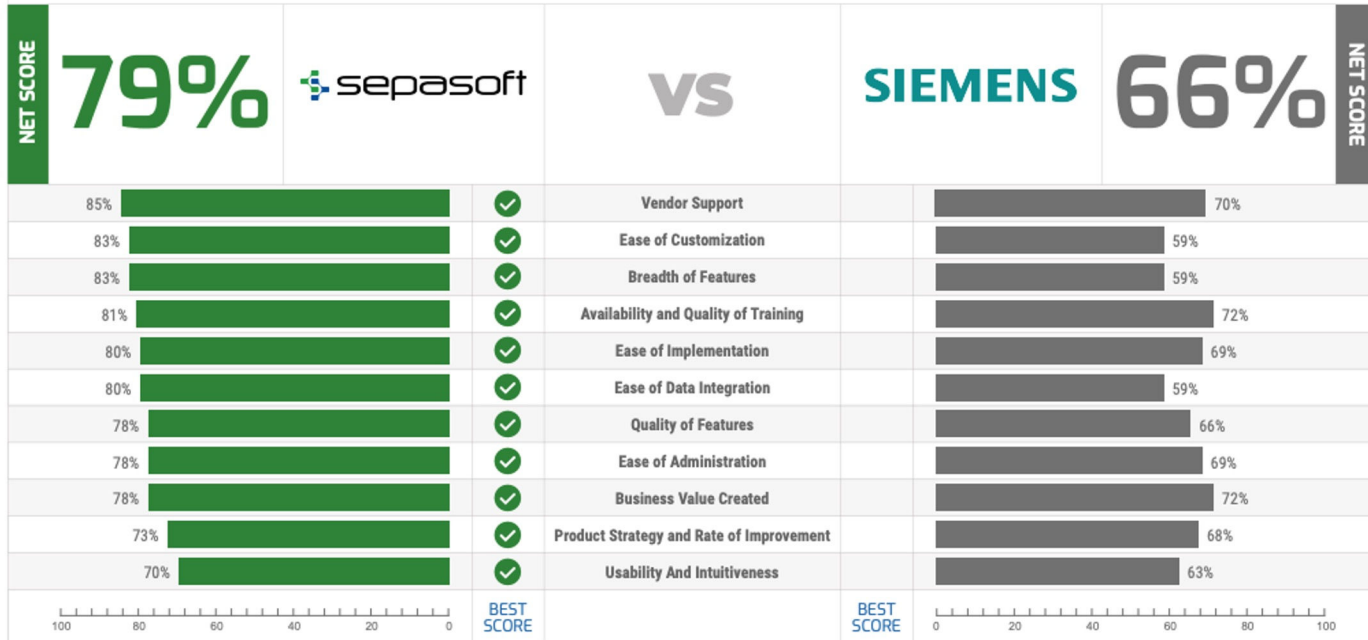
MES Competitive Landscape

MANUFACTURING EXECUTION/HEAD-TO-HEAD REPORT

Vendor Capability Summary



This page summarizes user satisfaction with a variety of vendor capabilities regarding their product offering(s). Look for strong and consistent performance across the board when assembling your shortlist, and follow up on areas of concern during the evaluation and negotiation processes.





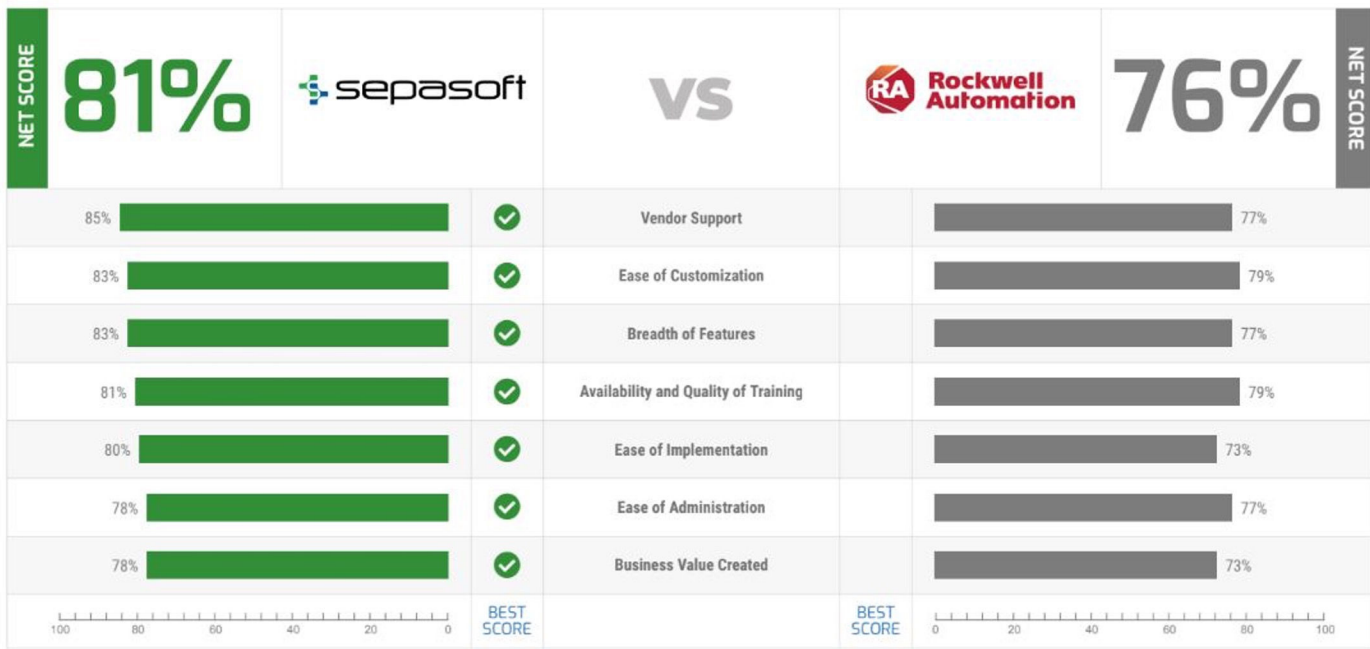
MES Competitive Landscape

MANUFACTURING EXECUTION/HEAD-TO-HEAD REPORT

Vendor Capability Summary



This page summarizes user satisfaction with a variety of vendor capabilities regarding their product offering(s). Look for strong and consistent performance across the board when assembling your shortlist, and follow up on areas of concern during the evaluation and negotiation processes.





Customer References

DAIMLER



ECOLAB®

Hunter®



[View More Companies](#)

Swedish
Match.



EAGLEPICHER
TECHNOLOGIES



EHC GLOBAL



Whirlpool®

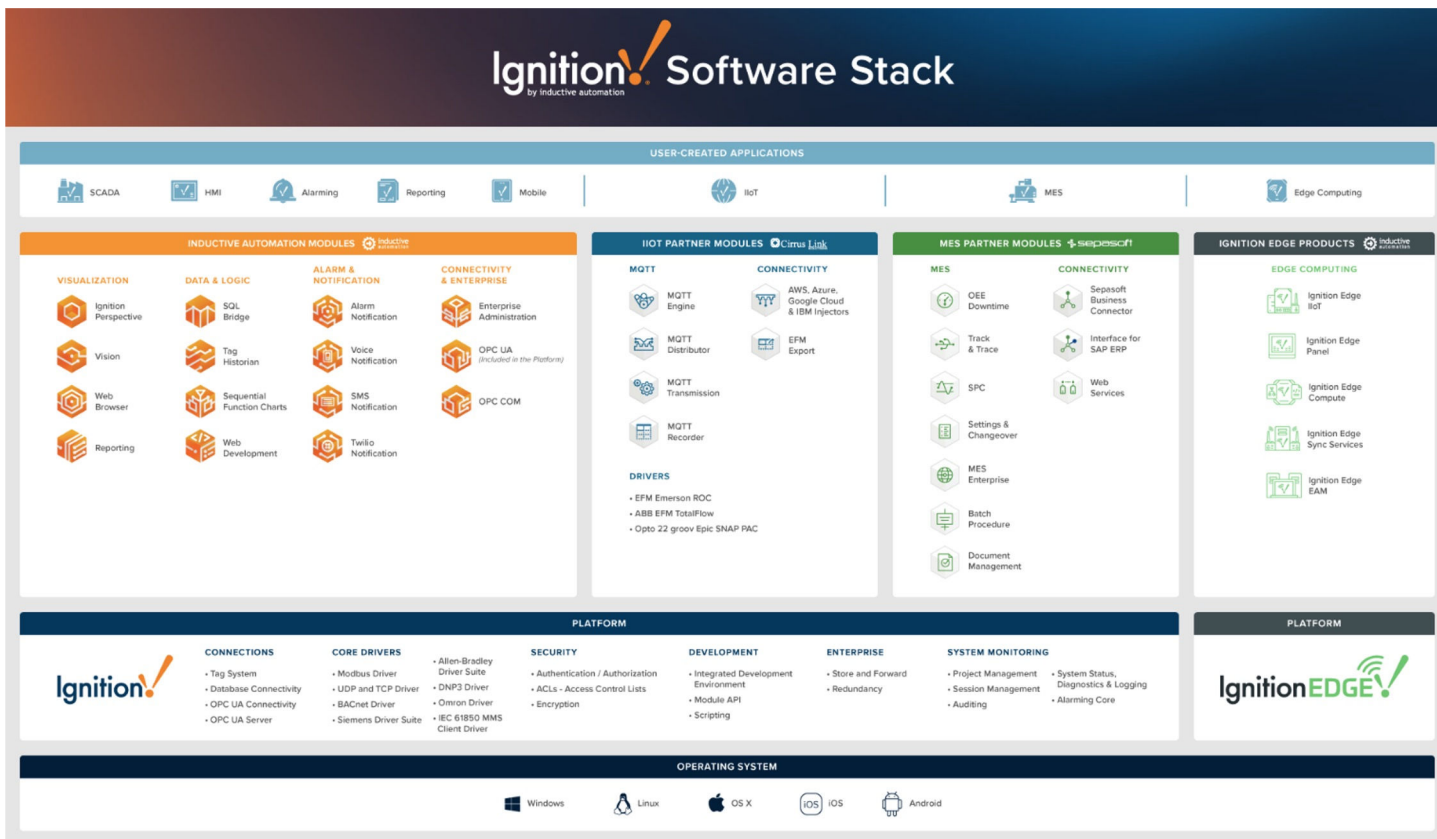
DURACELL®

Advanced
Composites





Ignition Software Stack












Sepasoft Module Stack



MES PARTNER MODULES sepasoft

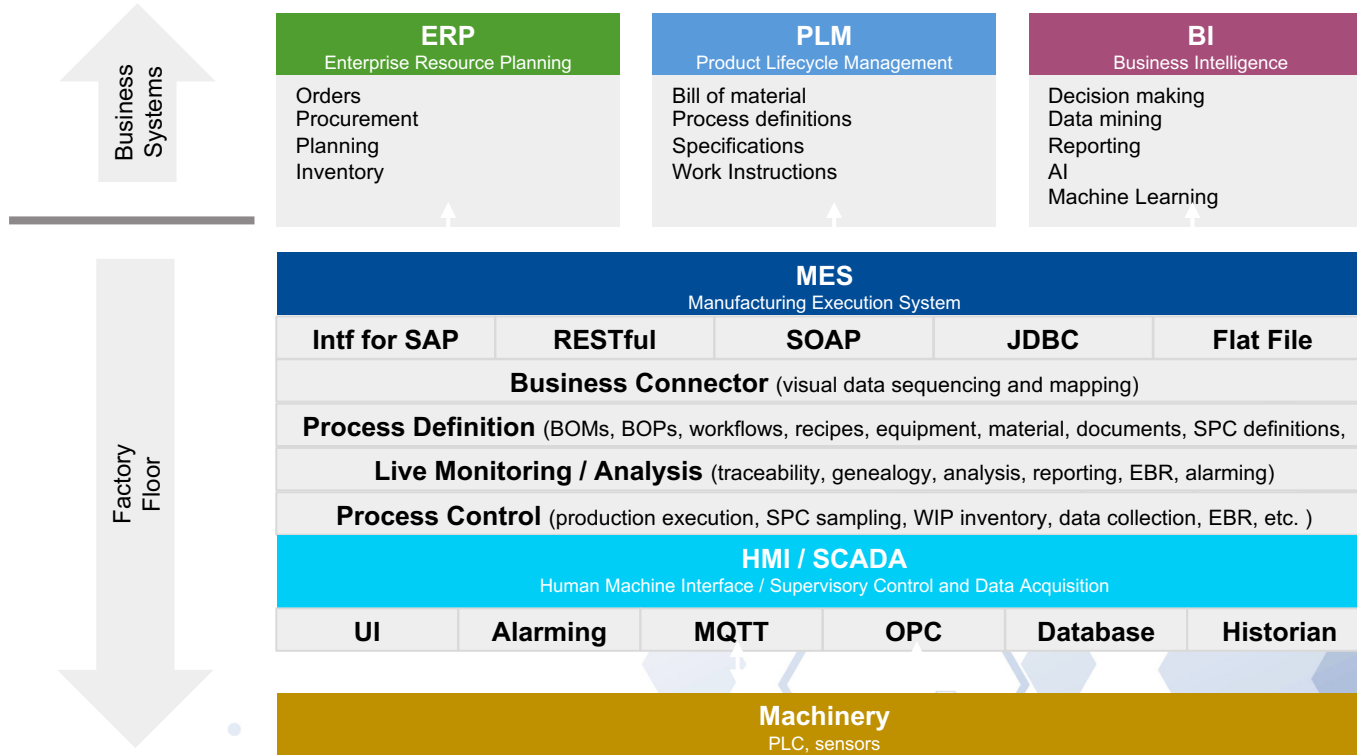
MES

-  OEE Downtime
-  Track & Trace
-  SPC
-  Settings & Changeover
-  MES Enterprise
-  Batch Procedure
-  Document Management

CONNECTIVITY

-  Sepasoft Business Connector
-  Interface for SAP ERP
-  Web Services

Scalable MES Platform



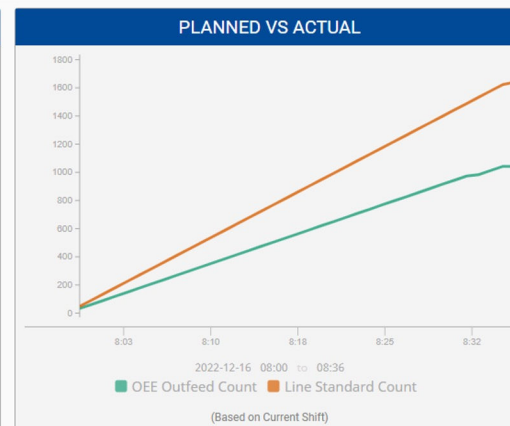
Scalable MES

- Synchronization of MES data
 - On Premise Servers
 - Private Cloud
- Scalable
 - Accommodates Companies with Mixed Facility Sizes
 - Seamless Scale Up Path (no need for rip and replace)
- Central Management
 - MES Server Health Monitoring
 - Central Configuration
 - Quicker Disaster Recovery





OEE TIME CHART																													Friday, December 16, 2022, 08:00																															
	37	38	39	40	41	42	43	44	45	46	47	48	49	50	51	52	53	54	55	56	57	58	59	00	01	02	03	04	05	06	07	08	09	10	11	12	13	14	15	16	17	18	19	20	21	22	23	24	25	26	27	28	29	30	31	32	33	34	35	
Schedule																																																												
⤴ Packaging Line 1 🔄																																																												
Packaging Line 1\Inspection Station																																																												
Packaging Line 1\Depal 🔄																																																												
Packaging Line 1\Filler 🔄																																																												
Packaging Line 1\Sealer🛑																																																												





OEE - Detailed Analysis

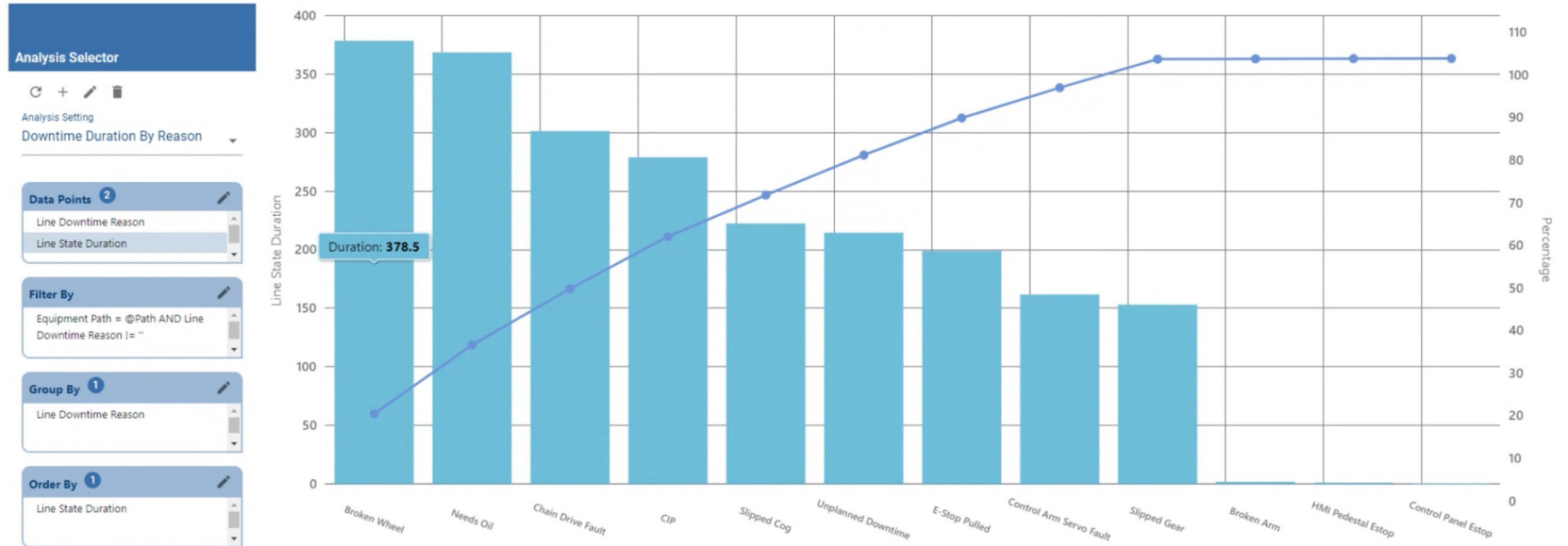
≡

Analysis

4 Nov 2022, 16:38 Configurator

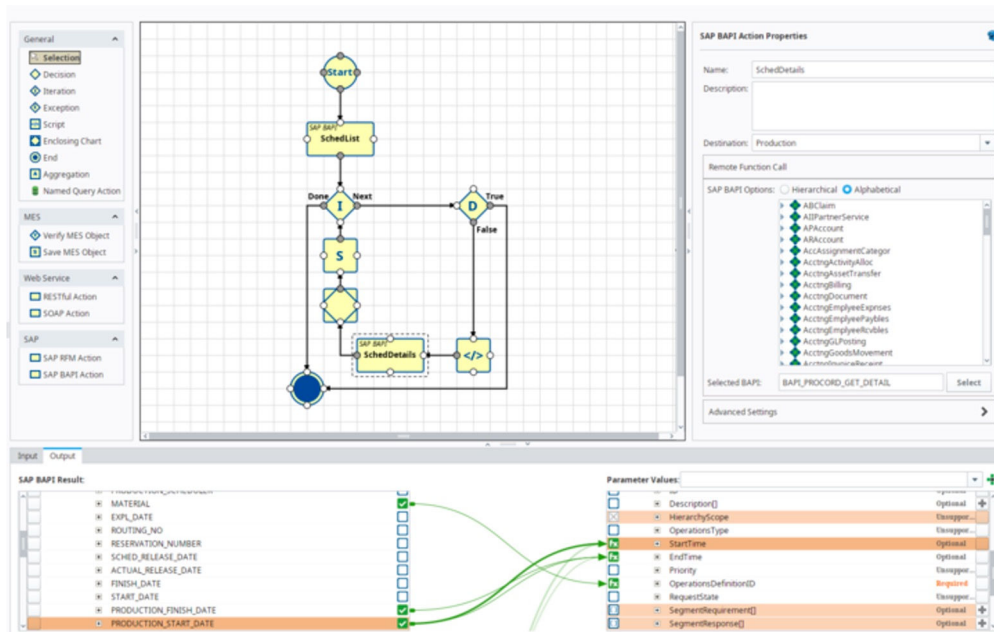
MES Object
Enterprise\Site 1\OEE Area\Packaging Line 1

From Oct 28, 2022 8:36 AM To Nov 4, 2022 4:36 PM





OEE - Scheduling

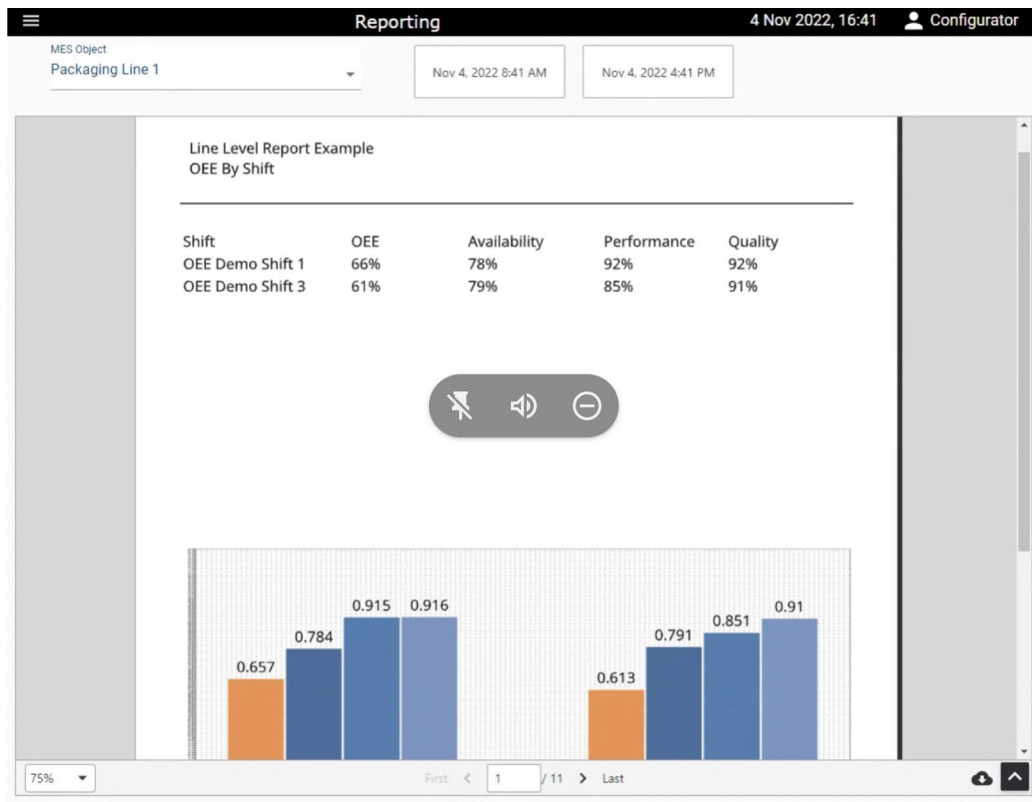


MES Schedule View	Monday, March 20, 2023	Tuesday, March 21, 2023	Wednesday, March 22, 2023	Thursday, March 23, 2023	Friday, March 24, 2023	Saturday, March 25, 2023
Enterprise\El Dorado Hills\Packaging Area\Packaging Line 1				Stout-Enterprise:El Dorado Hills:Packaging Area:Packaging Line 1		
Enterprise\El Dorado Hills\Packaging Area\Packaging Line 2				Stout-Enterprise:El Dorado Hills:Packaging Area:Packaging Line 2		
Enterprise\El Dorado Hills\Packaging Area\Packaging Line 3		IPA-Enterprise:El Dorado Hills:Packaging Area:Packaging Line 3	Stout-Enterprise:El Dorado Hills:Packaging Area:Packaging Line 3	Pilsner-Enterprise:El Dorado Hills:Packaging Area:Packaging Line 3		
IPA-Enterprise:El Dorado Hills:Packaging Area:Packaging Line 3 Scheduled Begin: 3/21/2023, 10:31:14 AM Scheduled End: 3/21/2023, 6:15:38 PM Progress: 21.05%						





OEE - Reporting



Challenge	Solution	Impact
<ul style="list-style-type: none">• Day old data• No information on downtime occurrences• No MES• No alarm notification• Need improvement controls on equipment and operations	<ul style="list-style-type: none">• OEE downtime• SPC• Web Services• Settings & Changeover	<ul style="list-style-type: none">• Real time data available• Unlimited licensing lowered TCO• More control and visibility on all operations



DAIMLER TRUCK

North America

Challenge

- No monitoring
- No control
- No feedback on status
- No visibility on maintenance

Solution

- OEE downtime

Impact

- **Operators gained access to call for help**
- **Visible Real-time data shared with other sites**
- **Equipment interlocks can now be detected**
- **Minimized downtime**
- **Access to reports about operations, personnel, equipment**





Track & Trace - Genealogy

Equipment
Packaging Line 1
Material
330 ml

Select Lot
1671232349716

Bottle Beer

Started: Thu Dec 15 10:03:13 PST 2022

Ended: Thu Dec 15 10:03:13 PST 2022

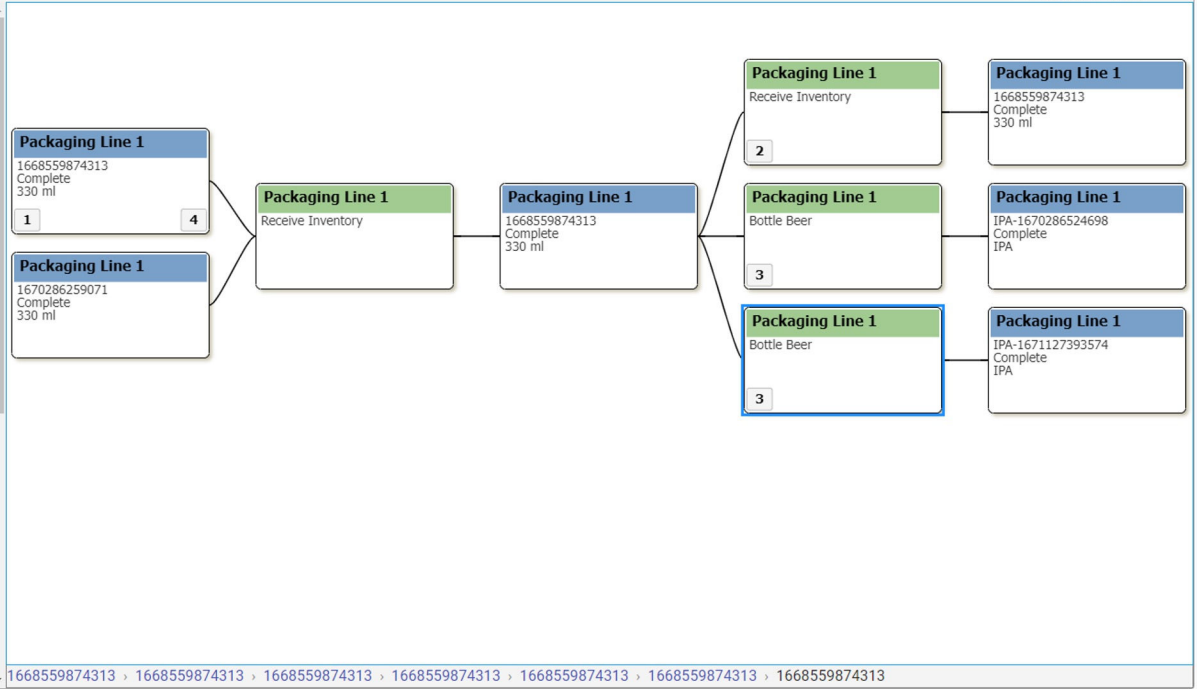
Processing Equipment

Type: Line
Name: Packaging Line 1

Material - In

Case-1:	
Lot No:	1669244766273
Material	6 Pack
Location	Packaging Line 1
Quantity	2.0
Begin Date Time	2022-12-15 10:03:13.576
End Date Time	2022-12-15 10:03:13.576
Bottles-1:	
Lot No:	1668559874313
Material	330 ml
Location	Packaging Line 1
Quantity	12.0
Begin Date Time	2022-12-15 10:03:13.576
End Date Time	2022-12-15 10:03:13.576
Caps-1:	

☐ Detailed Mode





Track & Trace - Inventory

sepassoft MES

/.../Packaging Area/Packaging Line 1: Receiving

RECEIVING

Packaging Line 1

Select Material Group

Bottles

Select material

500 ml

Enter Quantity

Receive Materials

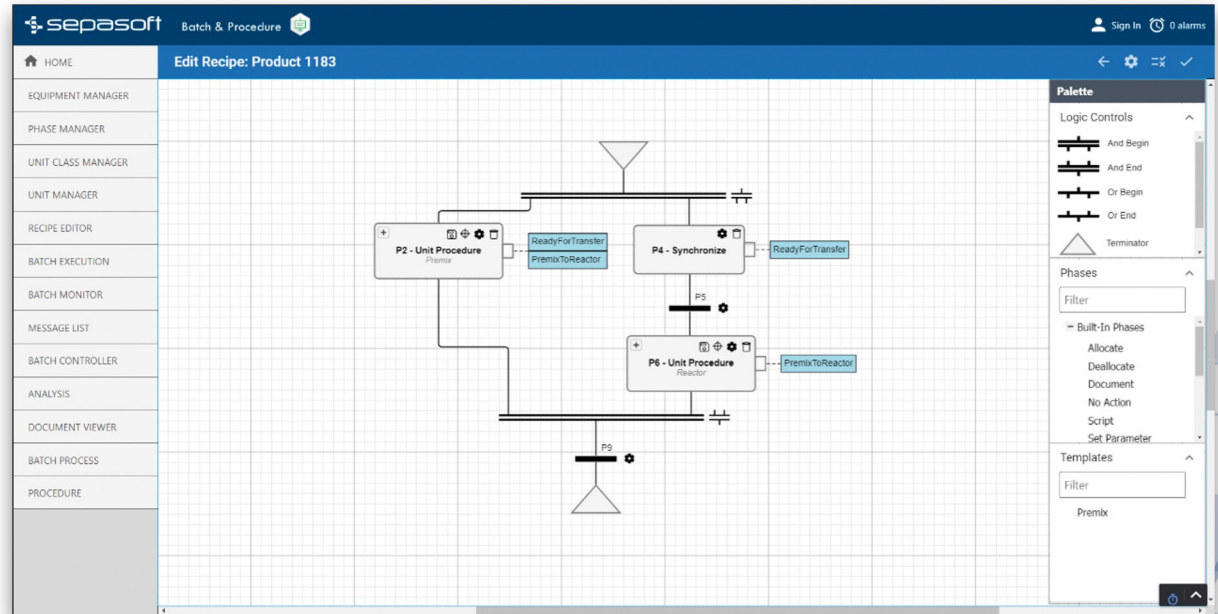
INVENTORY

MaterialGroup	Material	Quantity
Case	6 Pack	29
Case	12 Pack	33
Bottles	500 ml	804
Bottles	330 ml	1,952
Caps	Red Caps	688
Caps	Silver Caps	750



Batch & Manufacturing Procedure

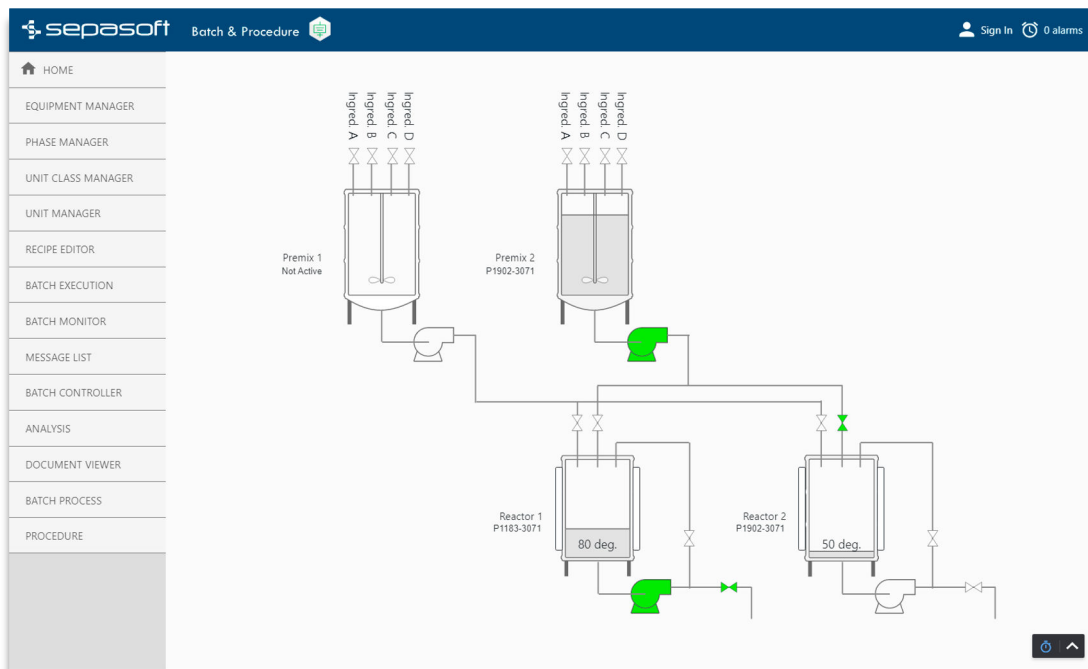
- Graphical Recipe Editor
- Separation of Recipes and Equipment Control
- Golden Batch Comparison
- Real-Time Batch Status Visibility
- Electronic Batch Records
- Electronic Signature verification





Batch & Procedure


Real-Time Batch Status





Batch & Procedure

Document Management

sepassoft Batch & Procedure 

Sign In 0 alarms

HOME

EQUIPMENT MANAGER

PHASE MANAGER

UNIT CLASS MANAGER

UNIT MANAGER

RECIPE EDITOR

BATCH EXECUTION

BATCH MONITOR

MESSAGE LIST

BATCH CONTROLLER

ANALYSIS

DOCUMENT VIEWER

BATCH PROCESS

PROCEDURE

Test ID EOPT-3025 Start Test

Engine Oil Pressure Test Procedure

☐ Remove oil pressure switch and connect the pressure gauge

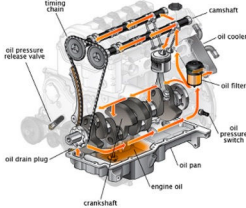


Image courtesy of CarMechanics.com

☐ Start the engine and set the speed to 2000 RPM

☐ Record oil pressure

✓





Batch & Procedure

Electronic Signatures

Pending Authorizations 1

Name/Role

Description

Status



Batch ID: DC-SG

Authorization Visual Inspection

admin

Batch ID: DC-SG, Authorization Visual Inspection



APPROVE

REJECT





Batch & Procedure

Reporting (EBR)

The screenshot displays the Sepasoft Batch & Procedure reporting interface. The top navigation bar includes the Sepasoft logo, the title 'Batch & Procedure', and user options like 'Sign In' and 'alarms'. A left sidebar contains a menu with items: HOME, MANAGERS, RECIPE EDITOR, BATCH EXECUTION, BATCH MONITOR, MESSAGE LIST, BATCH CONTROLLER, ANALYSIS, DOCUMENT VIEWER, BATCH PROCESS, PROCEDURE, PRESSURE TEST, MADE TO ORDER, BATCH REPORT, and EBR VIEWER. The main content area shows a 'Batch Report' for 'Batch ID: 221216_a'. The report title is 'Batch Report' with the subtitle 'Chronical Order of Steps and Parameters'. A QR code is visible with the text '221216_a' below it. The report content is organized into sections: 'P2 - Unit Procedure' and 'UP1 - Start'. Below these, there are two tables of data. The first table shows 'Command' (NONE), 'Begin Date Time' (Dec 16, 2022 07:28:57), and 'Execute Count' (1). The second table shows 'UP3 - Add Ingredient A' with details: 'Command' (Start), 'Unit Path' (Enterprise\Site\Area\Process Cell\Premix 1), 'State' (UNKNOWN), 'Unit Path' (Dec 16, 2022 07:28:58), 'Message' (Dec 16, 2022 07:28:58), and 'Begin Date Time' (Dec 16, 2022 07:28:58). At the bottom, there is a pagination bar showing 'First < 3 / 29 > Last' and a zoom level of '50%'.

Batch Report
Chronical Order of Steps and Parameters

221216_a

P2 - Unit Procedure
UP1 - Start

Command Dec 16, 2022 07:28:57	NONE
Begin Date Time Dec 16, 2022 07:28:57	Dec 16, 2022 07:28:57
Execute Count Dec 16, 2022 07:28:57	1

UP3 - Add Ingredient A

Command Dec 16, 2022 07:28:58	Start
Unit Path Dec 16, 2022 07:28:58	Enterprise\Site\Area\Process Cell\Premix 1
State Dec 16, 2022 07:28:58	UNKNOWN
Unit Path Dec 16, 2022 07:28:58	
Message Dec 16, 2022 07:28:58	
Begin Date Time Dec 16, 2022 07:28:58	

50% First < 3 / 29 > Last





STONE
BREWING

Challenge

- Recipe Management
- No control
- No feedback on status
- No verification on completion
- E-Signatures

Solution

- Batch & Procedure

Impact

- **Operator recipe creation (fast)**
- **Visible Real-time data shared with other sites**
- **Procedure & document management**
- **More efficient workflows & reporting (EBR)**
- **Electronic Signatures**

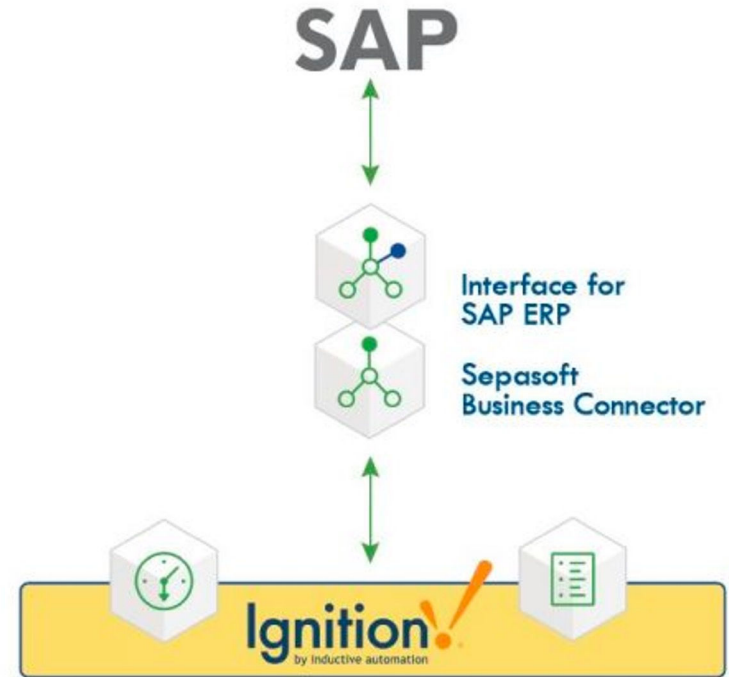
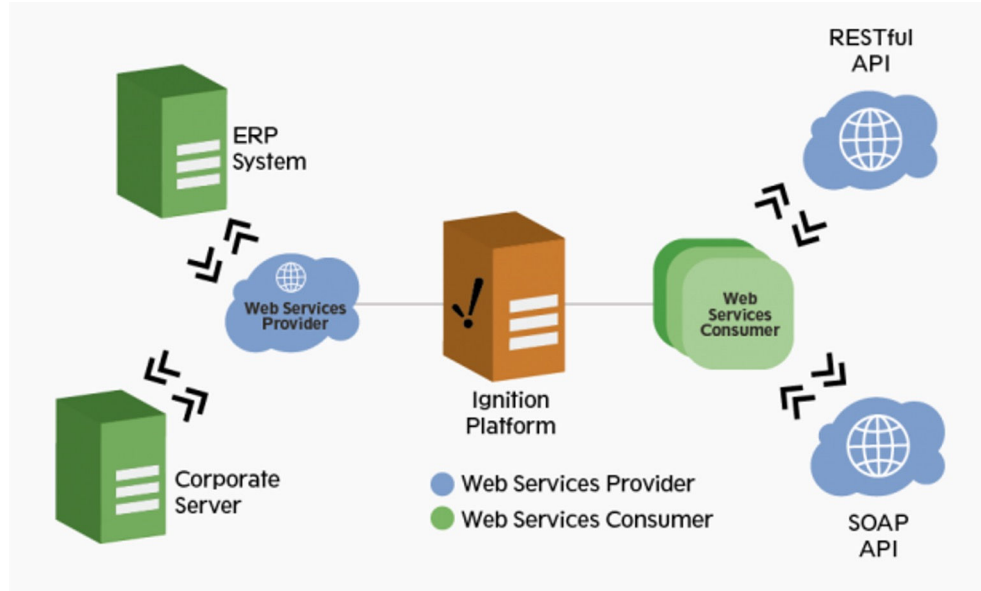
STONE BREWING SUCCESSFULLY
IMPLEMENTS MODERN BATCH SYSTEM

Speakers: Fred Zaboli, Nicole Williams





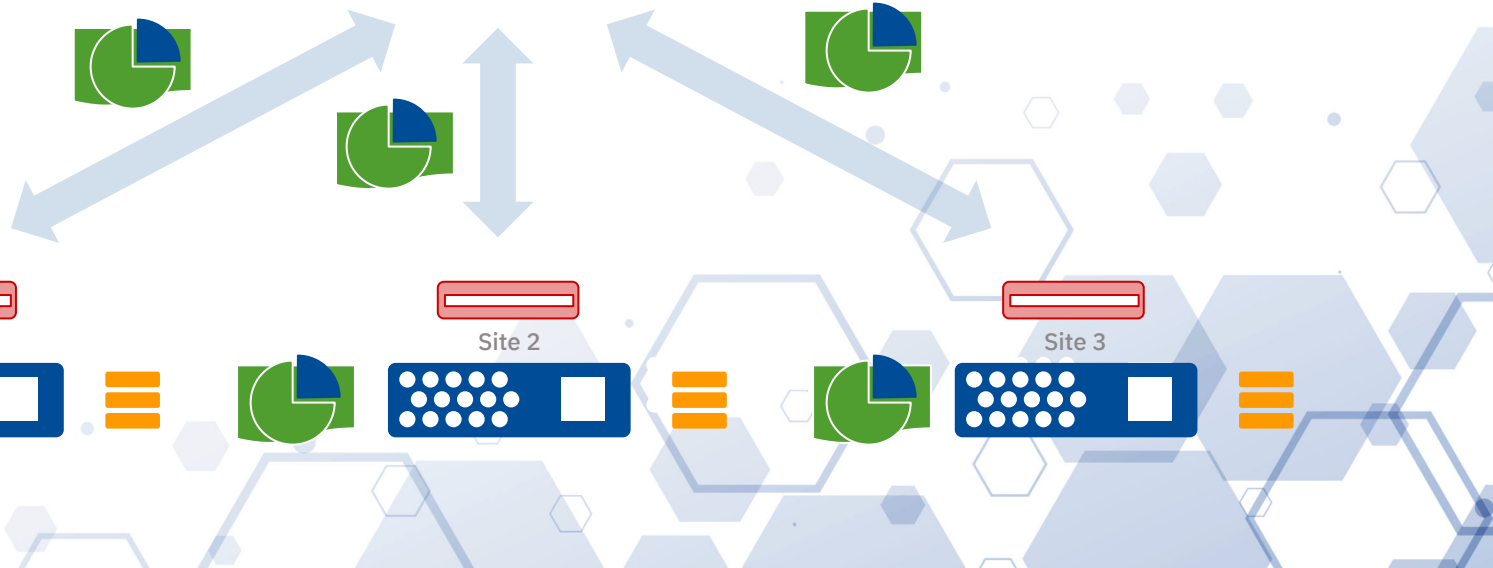
ERP Connectivity



Enterprise Architecture

What is it for?

- Customers with multiple physical sites
- Aggregation of data between sites
- MES data Synchronization



Customer Testimonials



MES Testimonial

“Before we put Ignition in, getting real-time data was quite often a struggle. Typically, we were looking at information that was a day old. Now with Ignition / Sepasoft, the data is immediately available and highly actionable. It’s a world of difference.”

Ed Rodden, Chief Information Officer for SugarCreek



MES Testimonial

“The best experience is how intuitively the operators have adapted to using computers on the lines and the ownership they have shown using this new system. They are very aware of the dashboards and have preferred using the new system checks over the old paper forms.”

Brad Logsdon, Business Analyst at Swedish Match



The background features a complex pattern of overlapping hexagons and thin lines in various shades of blue. Some hexagons are solid, while others are outlines. The pattern is denser in the top right and bottom left corners, with more open space in the center where the text is located.

Questions?