

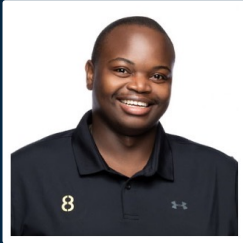
8

DLF

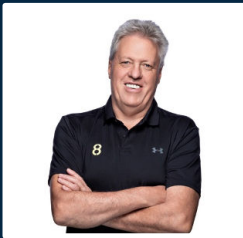
DATA
LIBERATION
FRONT



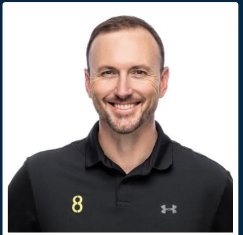
Laura Strydom
Customer Success Team
Element8



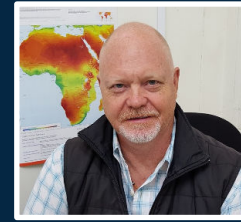
Tebello Masedi
Customer Success Team
Element8



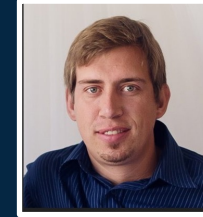
Gary Lowenstein
Customer Success Lead
Element8



Jaco Markwat
Team Lead
Element8



Hugo Stewart
Director
Sola Synergi



Willem van Heerden
Director
Sola Synergi



Roland Verwey
Control and Automation Manager
Saryx Engineering Group



Herman Vos
Senior Control & Automation
Developer
Saryx Engineering Group

SERVE

Humbly **serve**. Our community and the industry.

Learn from others. And share what we've learnt.

Provide intuitive solutions that **scale**.

Help ensure a **data-driven** and flourishing future for all.

PURPOSE

FRIDAY
14 JUNE
2024

DLF.
DATA
LIBERATION
FRONT

8

01 COMMUNITY NEWS

02 PRODUCT UPDATES

03 SOLA SYNERGI

04 Q & A

8

DLF_

DATA
LIBERATION
FRONT

WELCOME!



ButtaNutt



Dewfresh®



yes we can



sappi



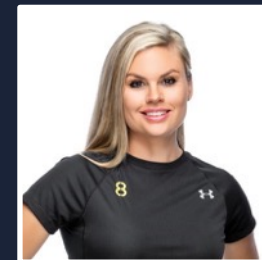
SULZER



NEW PARTNER CERTIFICATIONS



Partner Page



Clarise Rautenbach
Channel Partner Lead
Element8

8

DLF
DATA
LIBERATION
FRONT

TOP FIVE SELLING INTEGRATOR PARTNERS

March-May 2024

iritron
an iGROUP company



**Afrilek**



integ
System Integrators



**DARNER**
ENGINEERING



**advansys**



UPCOMING TRAINING

	Ignition Core	08-12 July	Durban
	Canary	22-23 July	Virtual
	Flow Core	12-14 August	Virtual
	Flow Advanced	15-16 August	Virtual
	Ignition Perspective	19-21 August	Virtual

Register here



HELPFUL RESOURCES: WHAT WE'RE WATCHING



Integrate**Live!**

REGISTER

**Information
Management
in the Post PI Era**
Part One

Software
toolbox

OPTO 22

canary

FLOW

LIVE BUILD: May 29 | 11AM EDT / 8AM PDT

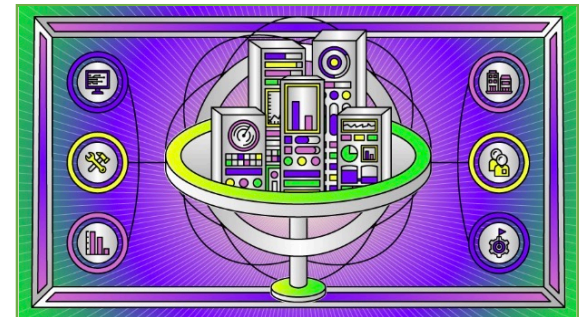
A PI Asset Framework - Without AVEVA

Information Management in a Post-PI Era
Canary, Opto22, Flow, Software Toolbox



Accelerating The Journey From Edge To Cloud To Results

How proven technologies can make edge-to-cloud much faster and easier



Integrator Roundtable: Building A Successful & Sustainable Future

Practical, first-hand advice on sowing the seeds of tomorrow's success in today's economy.



HELPFUL RESOURCES: WHAT WE'RE READING



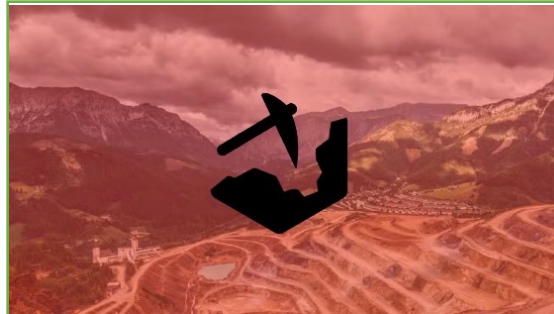
ARTICLE

INFORMATION MANAGEMENT AT SCALE

Effective Information Management Requires Scalability

The Keys to Scalable Information
Management in Manufacturing Data
Ecosystems

Flow



Canary Helps PMC Wash Away Unnecessary Costs

Enabling PMC to act and implement
preventative measures.

Canary



Revolutionising Water Management With Ignition And MQTT

Cloud application seamlessly controls 12
treatment sites

Ignition



CANARY VERSION 24! WHAT TO EXPECT

- **Licensing**
 - The ability to push a license back onto the Canary License server for another instalment.
- **Axiom**
 - Automated Reports include multiple screens in a single report. Screens can come from multiple applications.
- **Calculations**
 - Calculation sender sessions will be combined into a single sender session.
 - Option of backfilling a range of data without starting over from the initial backfill time.
- **Store & Forward**
 - A new Store & Forward service, running alongside the current Sender/Receiver services. Collectors running on v24 will use the new service.
- **Identity Service**
 - Consolidate all Canary services' login and security settings. Supporting other identity providers outside Windows AD will also allow easier SSO implementations using Axiom, the Canary Admin, ODBC, and the Excel Add-in.





Ignition! 8.3

by inductive automation



8

DLF_
DATA
LIBERATION
FRONT

 **SolaSynergi**
synergy through energy

 **Saryx**
ENGINEERING GROUP

 **Ignition!**
by inductive automation

 **Cirrus Link**
SOLUTIONS



Requirements

- Sola Synergi's solar hybrid projects are diverse and located in different areas.
- A cost-effective, scalable, and cloud-based hardware-agnostic system that could accept late data due to internet failures at their customer sites.
- A system with a template feature allowing for rapid deployment across sites by substituting tags specifically for each customer, which could update autonomously across sites.
- Remote management and maintenance of the assets.

Solution

- IIoT Ignition application with different customers able to view and monitor their sites
- > 30073 tags
- > 5316 alarms
- 9 Connected Databases
- 27 templates, 10 different screens per client

Value

- Seamless monitoring across multiple sites.
- Significantly improving navigation and data display through customisable projects and templates.
- Data management is streamlined.
- Ignition Perspective mobile allows clients to access their data anywhere, anytime.



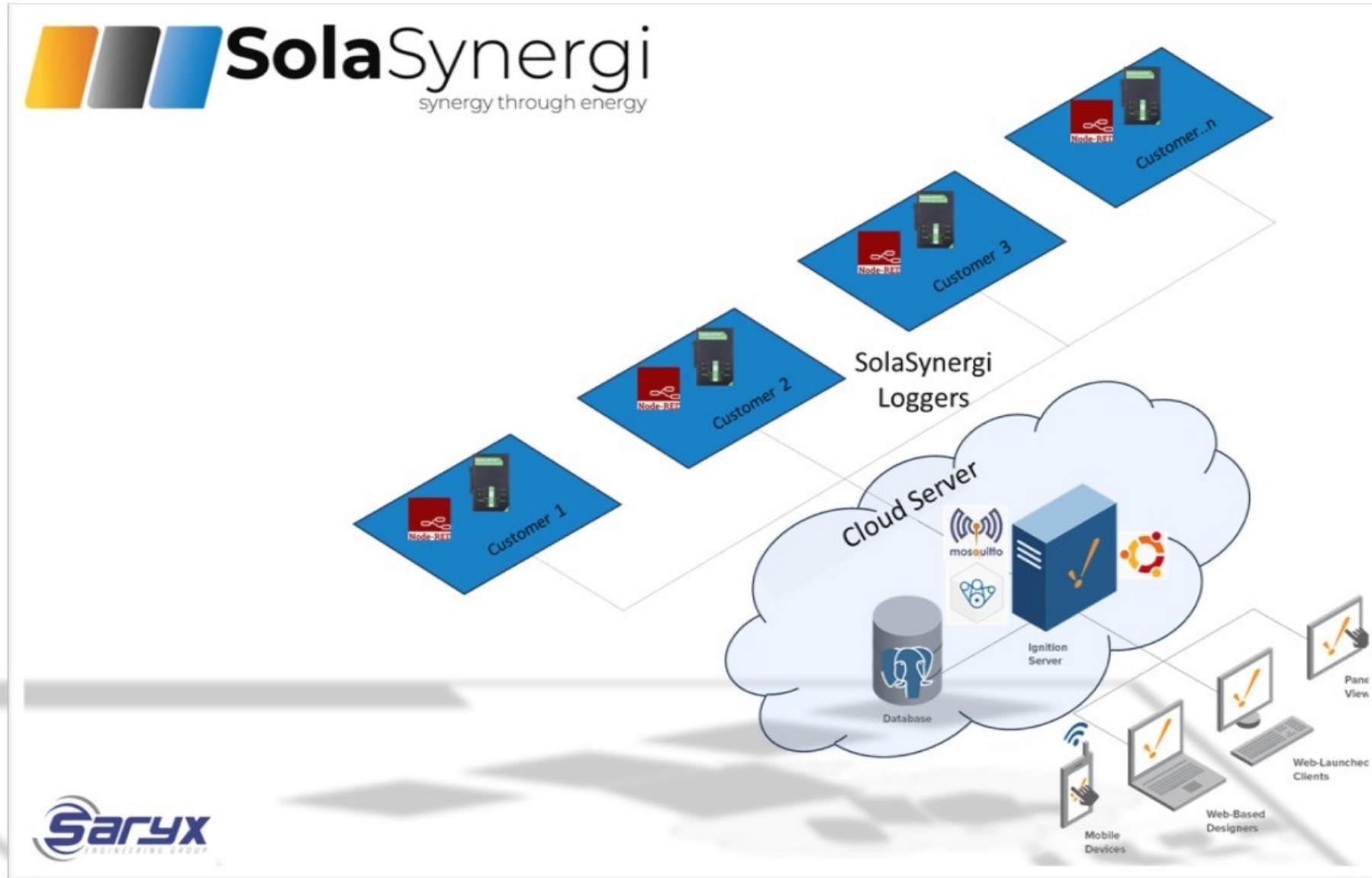
Customer Projects

Energy

Products: Ignition and Cirrus Link MQTT with SparkplugB



Architecture





Customer Projects

Energy

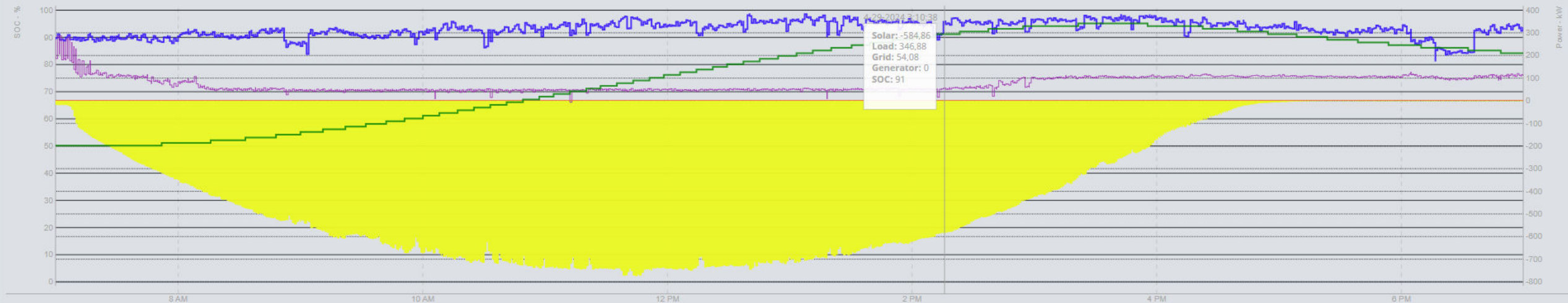
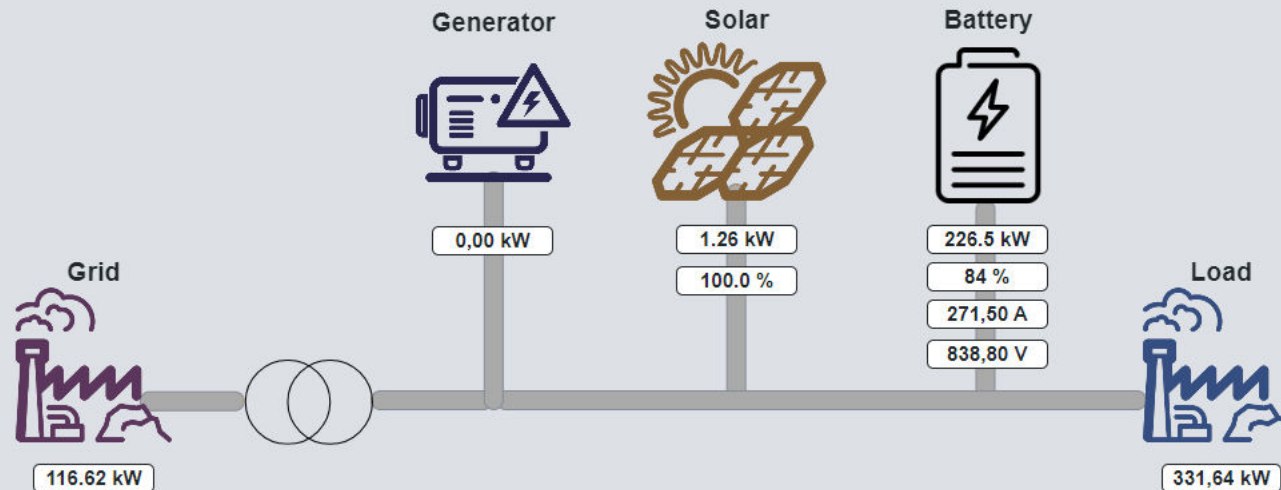
Products: Ignition and Cirrus Link MQTT with SparkplugB



Ignition SCADA Views

Home

Customer 6 Customer 6a Customer 6b

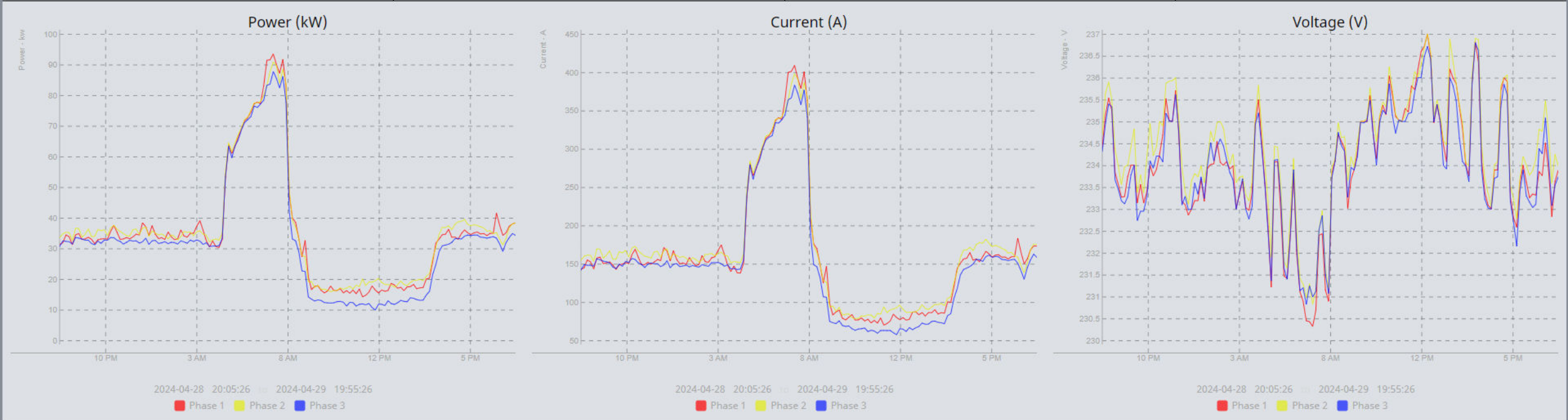


2024-04-29 07:55:07 19:54:07

Solar Load Grid Generator SOC

Detail

Customer 6a				Customer 6b					
ATESS		Sungrow		Solar MD		Power Meters		Deepsea	
Grid		PV		Load		Generator			
OVERALL		PHASE 1		PHASE 2		Phase 3			
Voltage	Current	Voltage	Current	Voltage	Current	Voltage	Current		
405 V	167.69 A	234 V	166.40 A	234 V	178.39 A	234 V	160.97 A		
Power	Power Factor	Power	Power Factor	Power	Power Factor	Power	Power Factor		
111.11 kW	0.993	36.87 kW	0.947	39.24 kW	0.939	35.00 kW	0.93		



Energy

Customer 6a

Customer 6b

Apr 29, 2024 8:13 PM

Daily

Weekly

Monthly

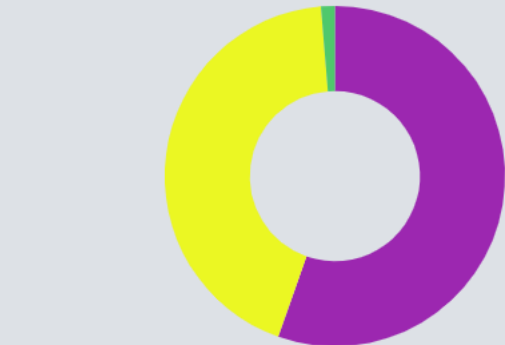
Yearly

Solar Usage

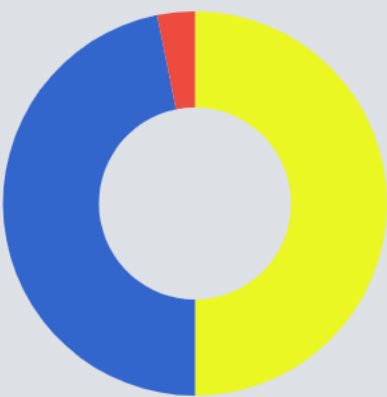
Produced

Balance

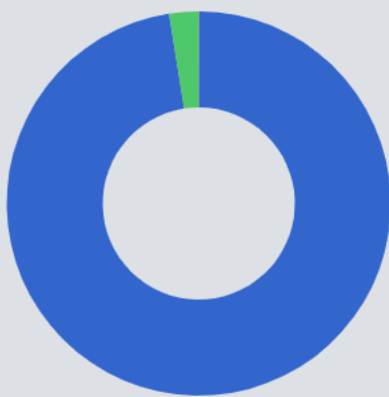
Consumed



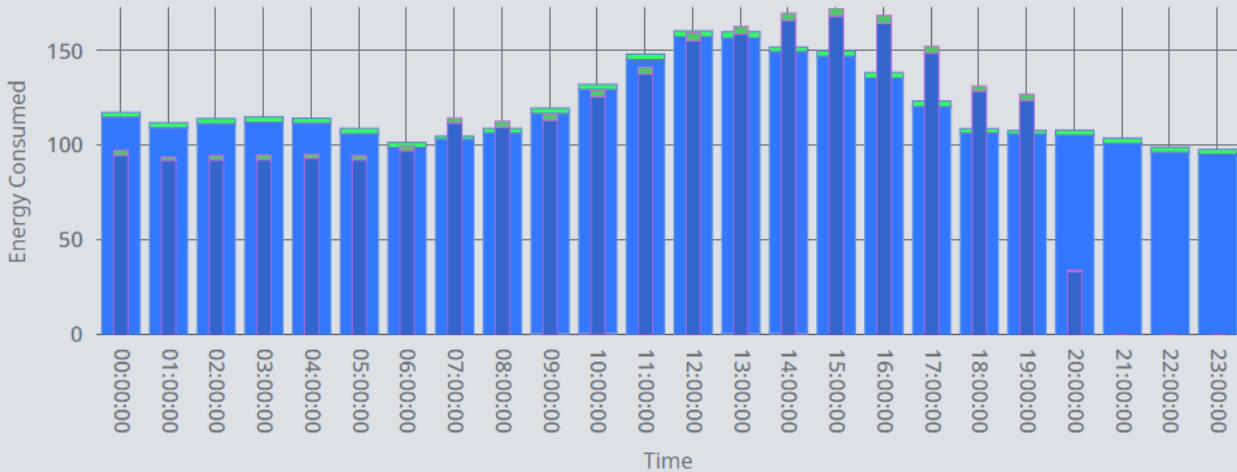
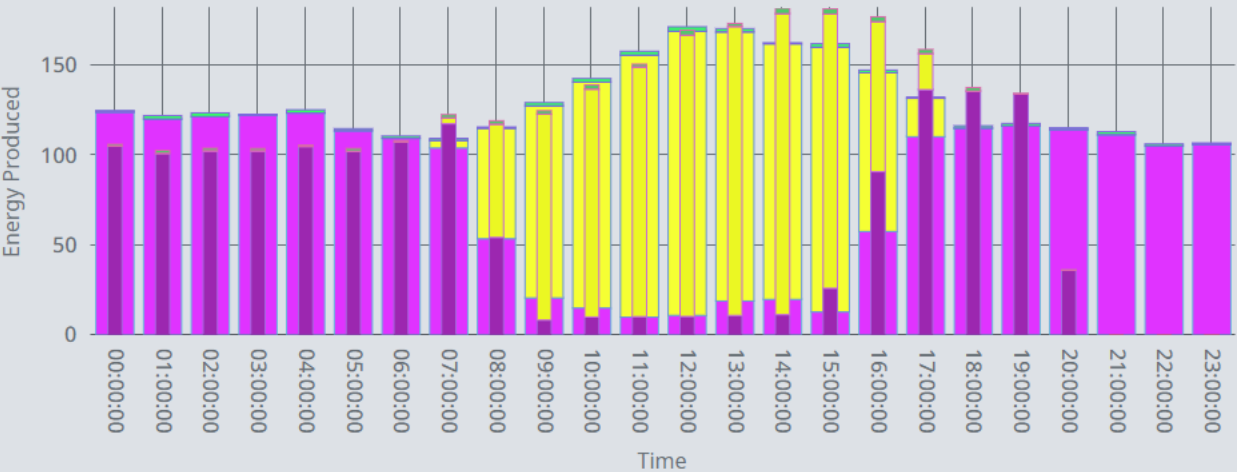
Grid 1,520.75 Solar 1,188.73 Generator 0
Battery 35.89



Produced 2,745.38 Consumed 2,570.82 Losses 174.55



Grid 1.4 Load 2,506 Battery 63.42



Detail

Customer 6a				Customer 6b			
ATESS		Sungrow		Solar MD		Power Meters	
AC INFO		AC INFO		BATTERY INFO		PV & TEMP INFO	
GRID CONNECTION		OUTPUT CONNECTION		DATA FROM INVERTER		PV INFO	
VOLTAGE UV	407.1 V	VOLTAGE UV	409.1 V	SYSTEM STATUS	System Preparation	PBD ACTIVE POWER	1.2 kW
VOLTAGE VW	407.1 V	VOLTAGE VW	403.8 V	BATTERY STATUS	Hold	CP ACTIVE POWER	-1.4 kW
VOLTAGE WU	406.6 V	VOLTAGE WU	406.7 V	BATTERY RELAY STATUS	Closed	CP POWER LIMIT	0.0 kW
CURRENT U	170.2 A	CURRENT U	314.6 A	CAPACITY	83 %	CP CURRENT U	9.8 A
CURRENT V	175.9 A	CURRENT V	299.5 A	VOLTAGE	838.8 V	CP CURRENT V	14.6 A
CURRENT W	164.6 A	CURRENT W	288.1 A	HIGHEST CELL VOLTAGE	3.332 V	CP CURRENT W	10.3 A
ACTIVE POWER	110.0 kW	ACTIVE POWER	209.7 kW	LOWEST CELL VOLTAGE	3,24	TEMPERATURES	
REACTIVE POWER	46.1 kVAr	REACTIVE POWER	43.1 kVAr	POWER	216,2	AMBIENT TEMPRATURE	15.0 DegC
APPARENT POWER	119.3 kVA	APPARENT POWER	214.0 kVA	CURRENT	257.7 A	BUCK CONVERTER HEATSINK TEMPERATURE	-30.0 DegC
DG CONNECTION		LOAD CONNECTION		CHARGE CURRENT SETPOINT	3 276,7	BUCK CONVERTER INDUCTOR TEMPRATURE	-30.0 DegC
CURRENT U	16.0 A	CURRENT U	471.9 A	DISCHARGE CURRENT SP	3 276,7	CONVERTER INDUCTOR TEMPRATURE	51.0 DegC
CURRENT V	26.0 A	CURRENT V	454.0 A	POS INSULATION IMPEDANCE	1000.0 Ω	HEATSINK TEMPERATURE	44.0 DegC
CURRENT W	26.0 A	CURRENT W	415.7 A	NEG INSULATION IMPEDANCE	1000.0 Ω	TRANSFORMER TEMPERATURE	0.0 DegC
ACTIVE POWER	0.5 kW	ACTIVE POWER	309.5 kW				
REACTIVE POWER	15.7 kVAr	REACTIVE POWER	57.5 kVAr				
APPARENT POWER	15.8 kVAr	APPARENT POWER	314.8 kVA				

0 ACTIVE 0 SHELVED



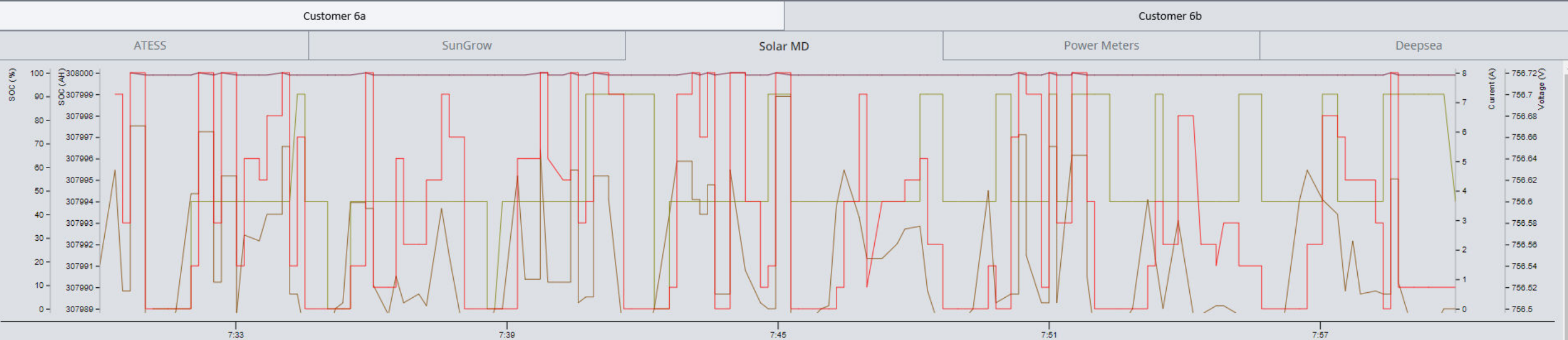
FILTERS (6): Active, Unacknowledged Active, Acknowledged Priority: Low Priority: Medium Priority: High Priority: Critical

Remove All

Active Time Label Priority 1 State 2

There are no active alarms

Detail



4-29-2024 7:31:00 to 8:00:45

■ SOC ■ Current ■ Voltage ■ Capacity AH

BatLog

STATE OF CHARGE	99 %	MIN CELL VOLTAGE	3.36 V
CAPACITY	307989.0 AH	MIN CELL VOLTAGE UNIT INDEX	4
No OF BATTERY ONLINE	11	MIN CELL VOLTAGE INDEX	110
CHARGE CTRL CURRENT	0.0 A	MAX CELL TEMPERATURE	24 Deg C
CHARGE CTRL VOLTAGE	779.1 V	MAX CELL TEMPERATURE UNIT	8
DISCHARGE CTRL CURRENT	6147.0 A	MAX CELL TEMPERATURE INDEX	113
DISCHARGE CTRL VOLTAGE	731.6 V	MIN CELL TEMPERATURE	12 Deg C
MAX CELL VOLTAGE INDEX	3.44 V	MIN CELL TEMPERATURE UNIT	4
MAX CELL VOLTAGE UNIT INDEX	7	MIN CELL TEMPERATURE INDEX	4
MAX CELL VOLTAGE INDEX	144		

🔔 0 ACTIVE 📦 0 SHELVED

🔍 ⌵ ⚙️

FILTERS (7): Active, Unacknowledged x Active, Acknowledged x Cleared, Unacknowledged x Priority: Low x Priority: Medium x Priority: High x Priority: Critical x

Remove All



8

DLF_
DATA
LIBERATION
FRONT

 **SolaSynergi**
synergy through energy

 **Saryx**
ENGINEERING GROUP

 **Ignition!**
by inductive automation

 **Cirrus Link**
SOLUTIONS

A person stands on the peak of a dark, jagged mountain. Below the peak, a thick layer of clouds fills the valley. The sun is setting in the upper right corner, casting a warm glow over the scene. The word 'ELEV' is written in large, white, sans-serif capital letters across the middle of the image, with the person standing on the peak of the letter 'V'.

ELEV

HAZENDAL,WC
22 OCTOBER

IRENE LODGE,GAU
25 OCTOBER