



inductive
automation®

Ignition!® Fundamentals

The Unlimited Platform for SCADA
and so much more

Presenters



Kent Melville

Director of Sales Engineering
Inductive Automation

Today's Agenda

- Inductive Automation Company Background
- Industries and Customers
- Ignition Overview & Features
- Q&A

About Inductive Automation

How We Got Started:

Inductive Automation was founded in 2003 by Steve Hechtman, who worked for 25 years as a control system integrator and grew frustrated with the solutions available.

Through the cross-pollination of IT and SCADA technologies Steve and his team developed and IT product for the SCADA world that redefines the category. The result is Ignition: The New SCADA



About Inductive Automation

Mission Statement:

Our mission is to create industrial software that empowers our customers to swiftly turn great ideas into reality by removing all technological and economic obstacles.



DREAM IT
DO IT

The Growth of Ignition

Direct Sales



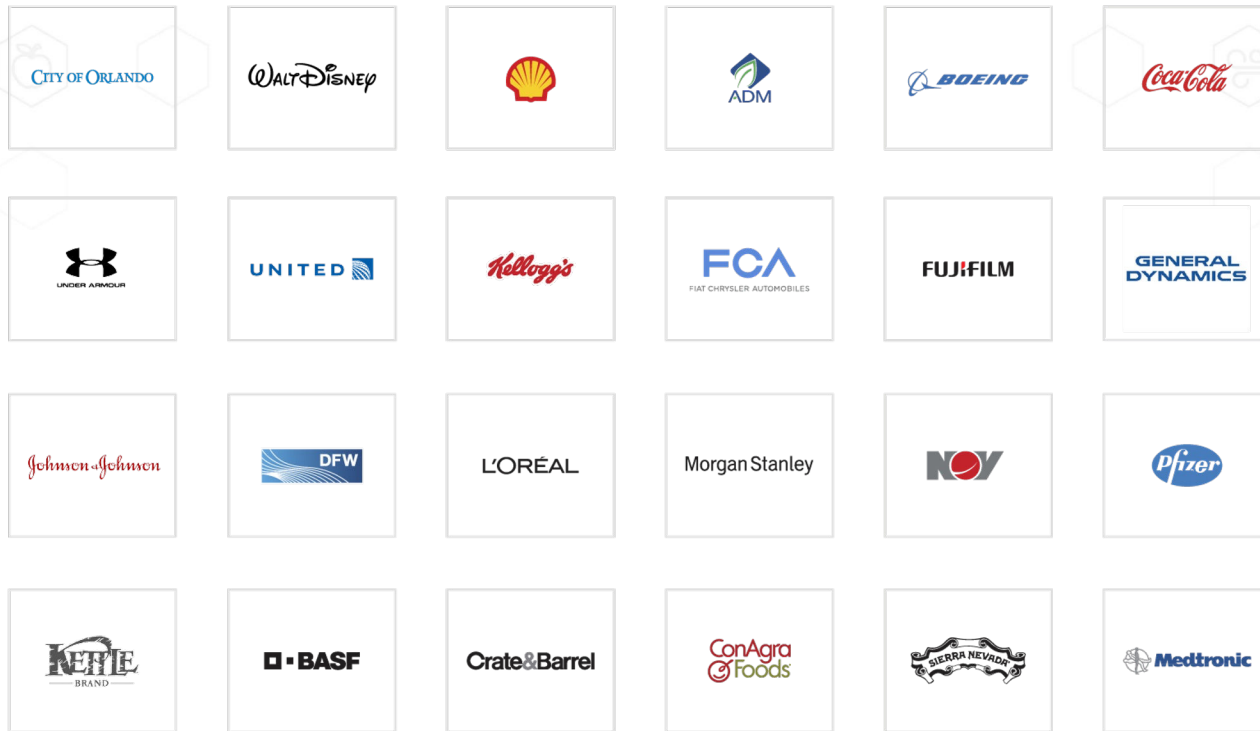
Inductive Automation
by the numbers

20+
Years in
the industry

57%
Fortune 100
companies using Ignition®

100+
Countries with
Ignition installations

Who Uses Ignition?





Inductive Automation

Ignition Distributors



inductive
automation

Australia

Our Integrator Program

Numerous Benefits for Integrators

- Strong partnership
- Tech support is always free
- Discount pricing
- No up-front costs
- No obligations
- Certification program
- Joint marketing opportunities





inductiveuniversity.com

*Ignition User Manual also available at:
docs.inductiveautomation.com*

Ignition: Industrial Application Platform

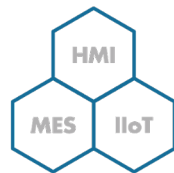


The world's first database-centric, 100% cross-platform, web-deployed industrial application platform for HMI/SCADA.

Ignition: Industrial Application Platform

One Universal Platform for SCADA, MES & IIoT

- Unlimited licensing model
- Cross-platform compatibility
- Based on IT-standard technologies
- Scalable server-client architecture
- Web-managed
- Web-launched on desktop or mobile
- Modular configurability





aws marketplace

Microsoft Azure



IgnitionEDGE!



Ignition Software Stack

USER-CREATED APPLICATION LAYER

SCADA, HMI, MES, IIoT

THIRD-PARTY MODULE LAYER

MES

- OEE Downtime
- Track & Trace
- SPC
- Recipe/Changeover
- Web Services
- Instrument Interface

MQTT

- Engine
- Distributor
- Transmission
- Injectors
- Remote Manager

CORE MODULE LAYER

OPC UA



SQL Bridge



Tag Historian



Vision



Ignition Perspective



Reporting



Alarm Notification



Enterprise Administration



PLATFORM LAYER



- OPC UA Client
- Database
- Web Server
- System Logging
- Licensing

- Unified Development Environment
- Auditing
- Authentication
- Store & Forward

- Alarming Core Functionality
- Database Connectivity
- Real-Time Tag Database
- Module API
- Redundancy

OS LAYER



Windows
(Any Newer Version)



Linux



OS X

Ignition: The Ultimate in Data Acquisition

Touch Panels

Connect to any touch panel screen



Databases

Connect to any number of databases



PCs

Use any PC regardless of operating system



Mobile Devices

Access data via wireless smartphones and tablets



PLCs

Connect to any PLC through OPC



LIMs

Connect to virtually any device, such as barcode scanners, scales, sensors, etc.



MES & ERP Systems

Communicate with other enterprise systems



Web Services

Connect to any web service including REST and SOAP



MQTT

Connect intelligent devices to infrastructure



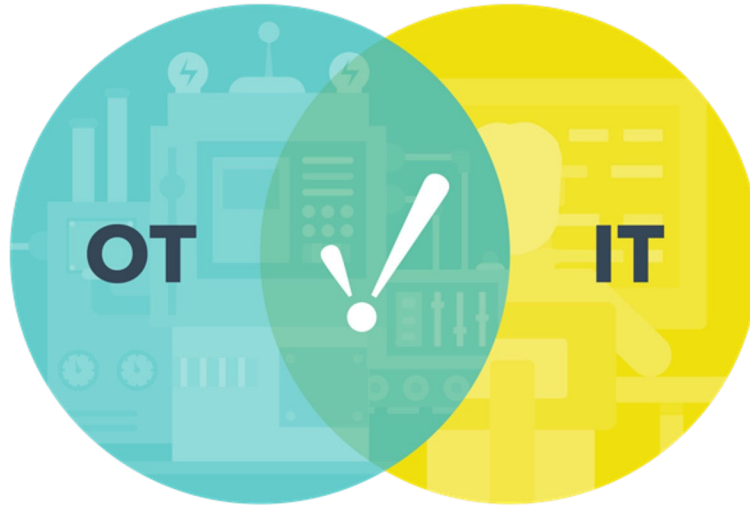
OPC UA, OPC DA, OPC Tunneler

Access historical data from databases, devices, and applications



Reduce OT-IT Friction

**OPERATIONAL
TECHNOLOGY**



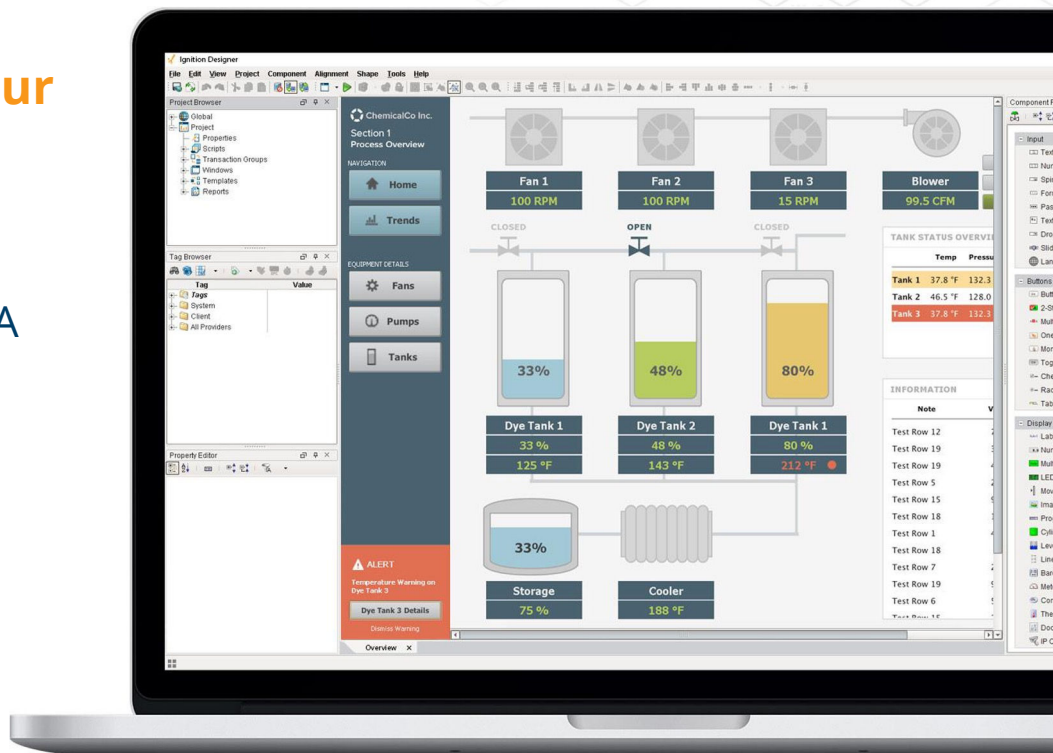
**INFORMATION
TECHNOLOGY**

What Does Ignition Do?

HMI / SCADA Solutions

See, Control, and Analyze All Your Data, All in One Place

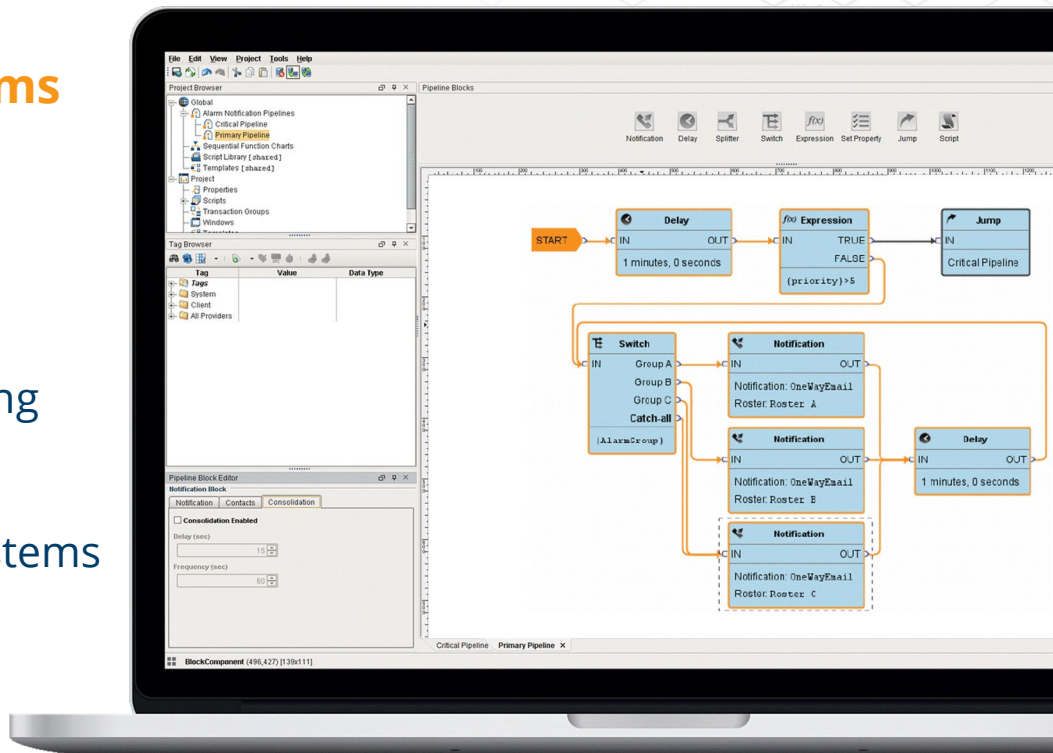
- Unlimited clients
- Rapidly develop any kind of SCADA project
- Powerful visualization tools
- SCADA alarming
- Industrial historian
- Dynamic reporting
- Mobile access



Alarming Solutions

Build Advanced Alarming Systems with Drag-and-Drop Ease

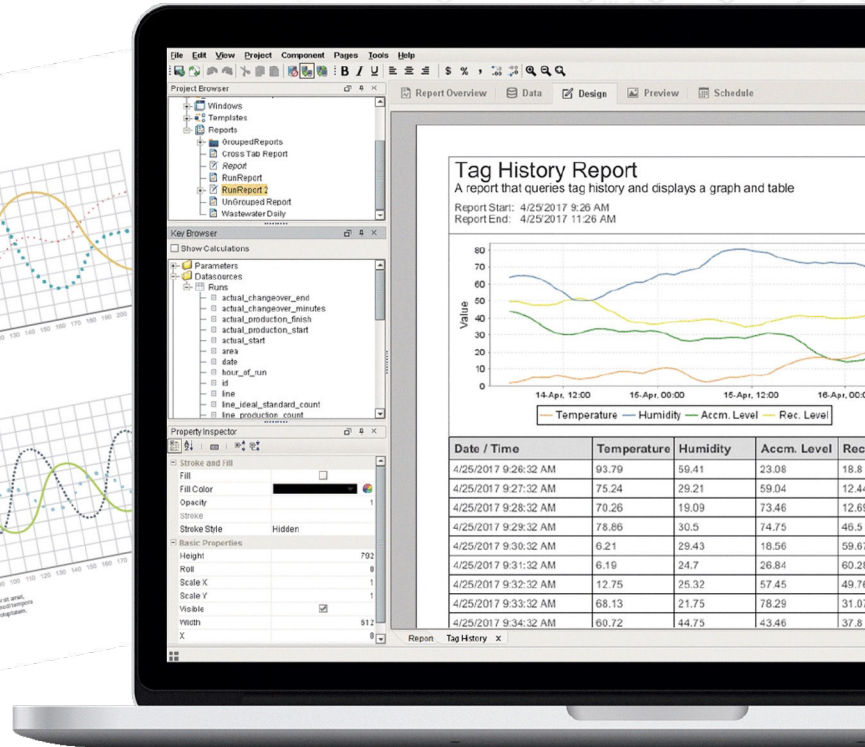
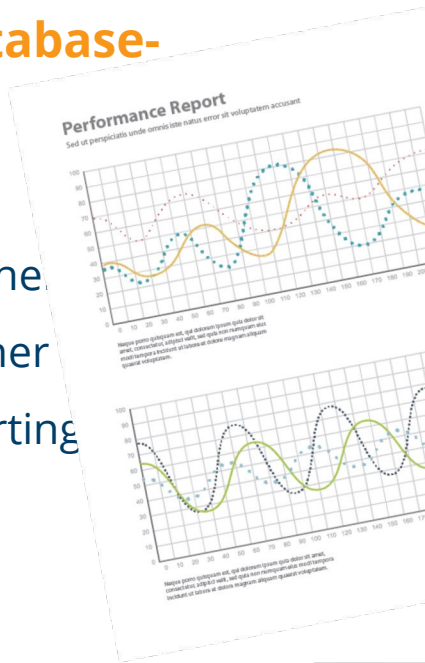
- Easily connect to your data
- Simple alarm management
- Powerful alarm analysis & reporting
- Dynamic customizable alarms
- Develop advanced notification systems with ease
- Reliable 2-way notification
- SQL support



Reporting Solutions

Easily Create Dynamic, Database-Driven Industrial Reports

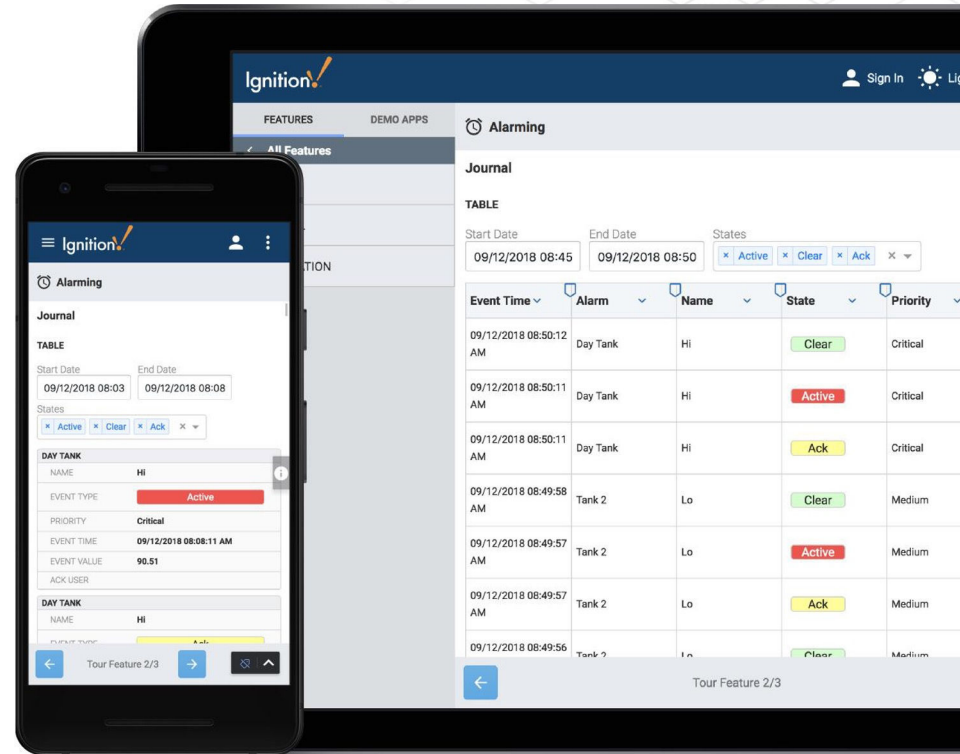
- Connect to all of your data
- Combine all your data together
- Drag and drop report designer
- Easily setup automatic reporting
- Export to any format



Mobile Solutions

Add the Magic of Mobile to Your Applications

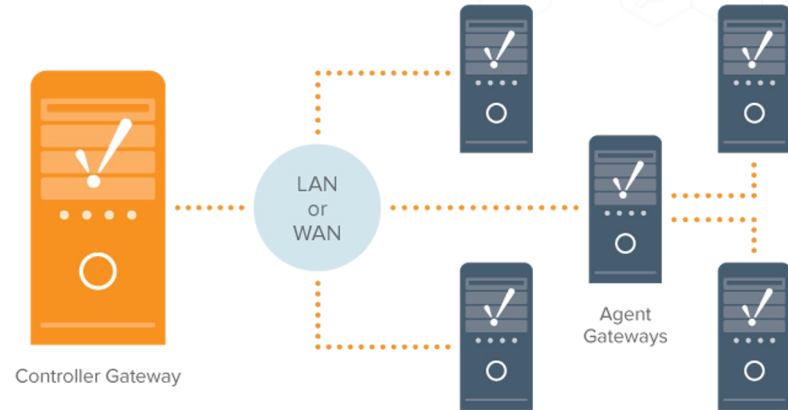
- Connect to all of your data
- Combine all your data together
- Drag and drop designer
- Use any browser
- Mobile-responsive
- Native Apps – Harness GPS, camera, accelerometer



Enterprise Administration

Enhance the scalability of your Ignition system with the EAM Module

- Control and monitor multiple Gateways from a central Gateway
- Schedule, automate, and track maintenance tasks from one central location
- Agent Gateway health indicators can quickly monitor for abnormal health in an agent
- Remote project and license management



IIoT Solutions

Make Your Data More Accessible, Powerful, and Efficient with MQTT

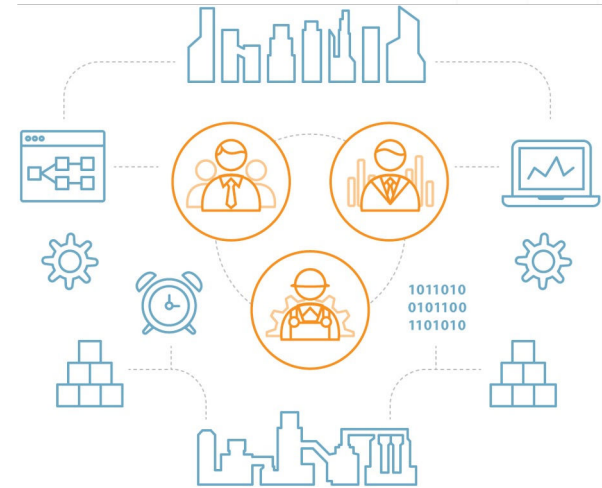
- Decouple devices and applications
- Streamline your data pipeline
- Automatic tag creation and health metrics
- Edge-of-network solutions
- On-premise solutions
- Cloud solutions
- IIoT dashboards



MES Solutions

Tools for Tracking Production, Eliminating Downtime, and More

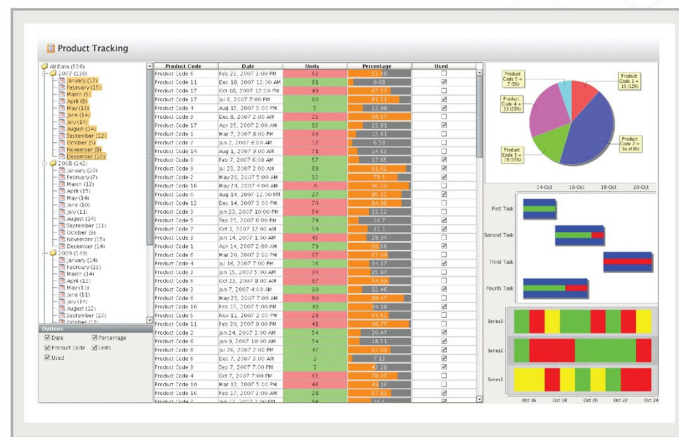
- Connect to all of your data
- Improve efficiency and productivity
- Flexible ERP connectivity
- OEE / Downtime
- Track & Trace
- Recipe / Changeover
- Statistical Process Control



Database Solutions

Native support for SQL databases to build database applications

- Connect to any SQL database
- Convert Access/Excel files to a centralized application
- Powerful querying and visualization
- Stored procedure support
- Drag and drop query builder



Transaction Manager

Integrate PLCs and SQL Databases

- Connect to PLCs/devices through OPC-UA or MQTT
- Connect to any SQL database
- Log contextual data easily
- Move data bidirectionally
- Synchronize PLCs and databases
- Build recipe & batching systems
- Sequence your process



Protocol Conversion / Cloud Injection

Build on trusted known standards

- OPC-UA & MQTT
- Amazon AWS & Microsoft Azure support
- Database connectivity
- Web service connectivity (REST, SOAP)
- Easily move data around
- Powerful expression language
- Powerful scripting language
- Runs on any OS

PLCs:
OPC UA
& DA



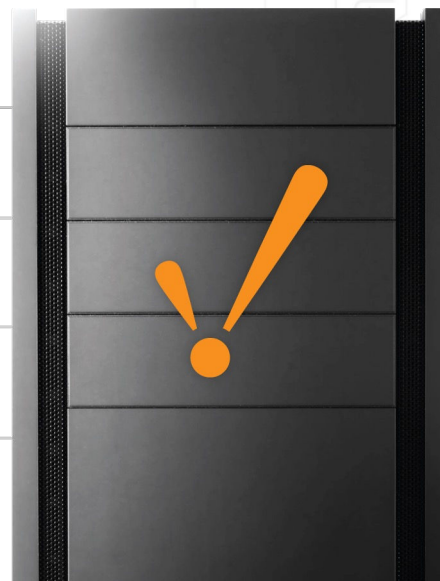
Databases



SMTP



MQTT



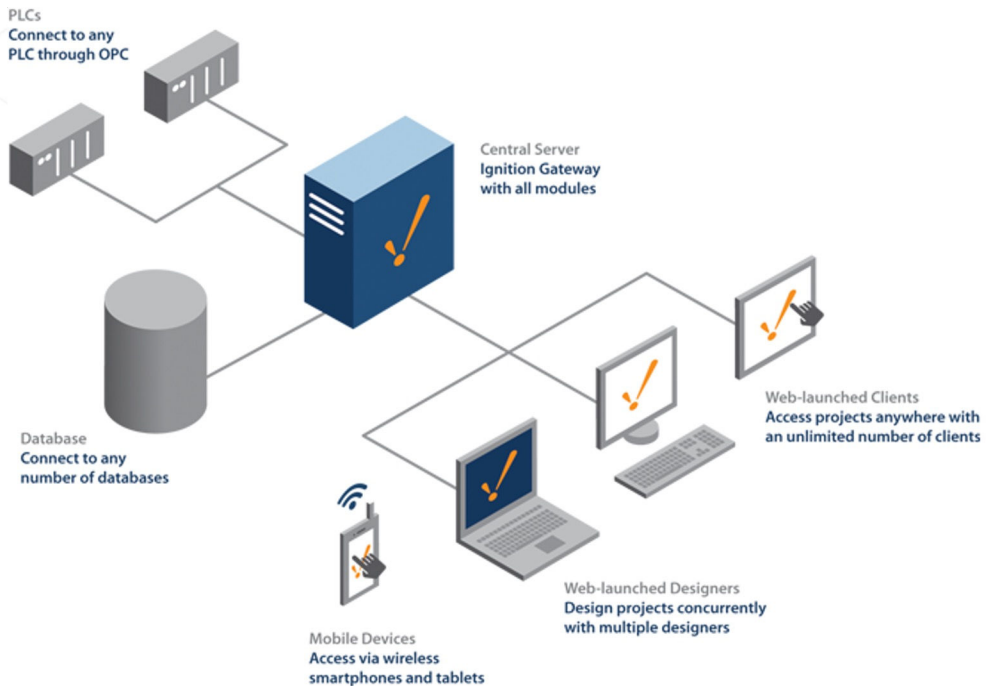
The Bottom Line



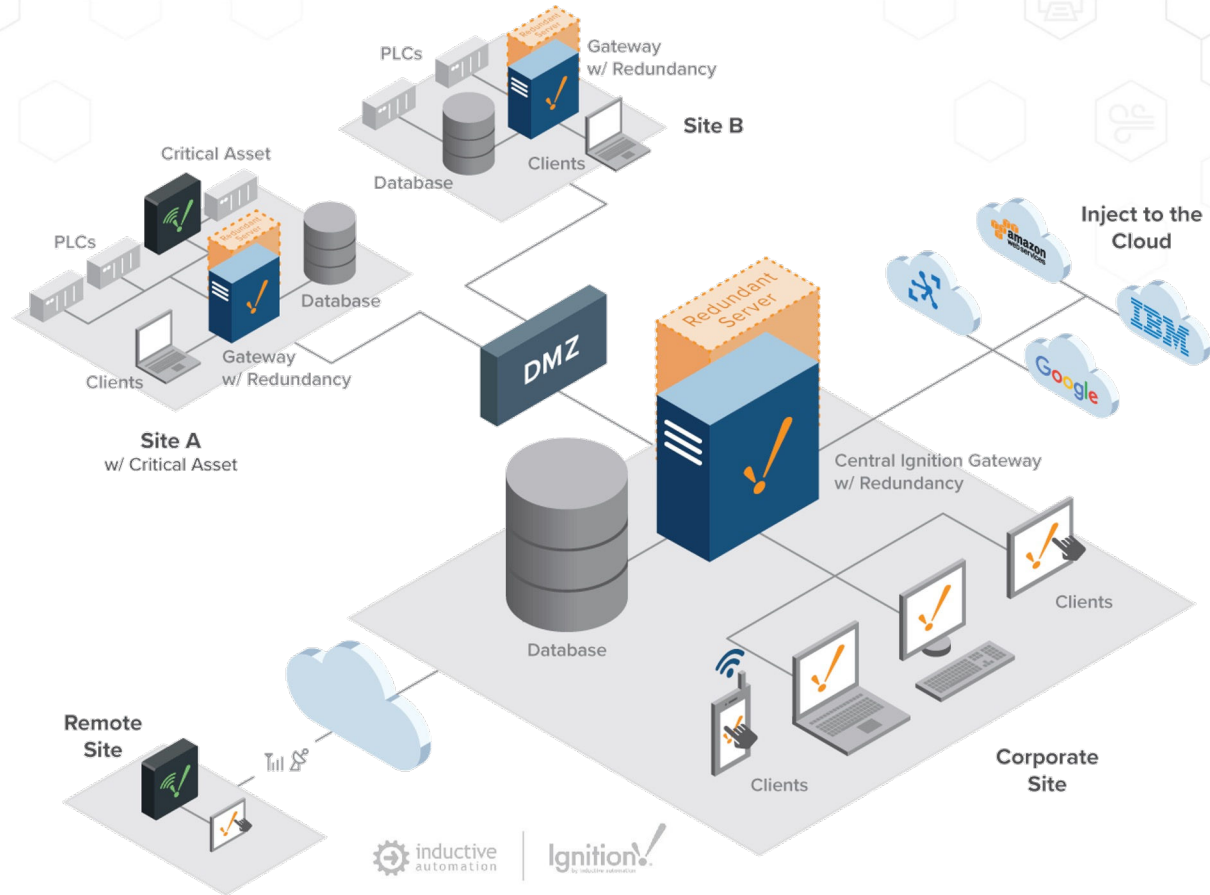
No surprises.
Pay One Price per Server
License

Unlimited Tags
Unlimited Clients
Unlimited Screens
Unlimited Users
Unlimited
Connections
Unlimited Devices
Get
Everything
You Need!

Standard Architecture



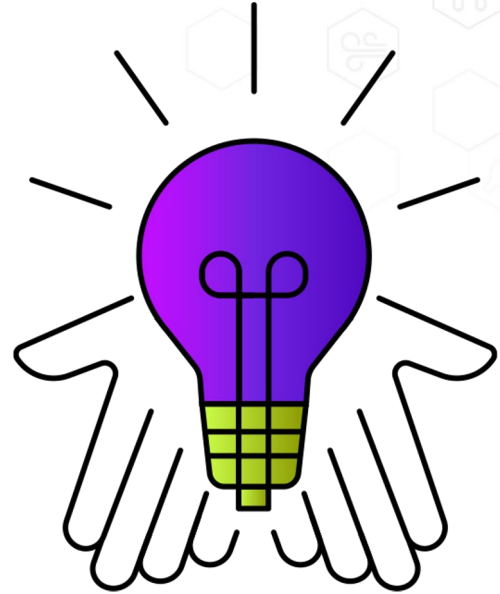
Enterprise Architecture



What Digital Transformation is Really About

Digital Transformation **is not**:

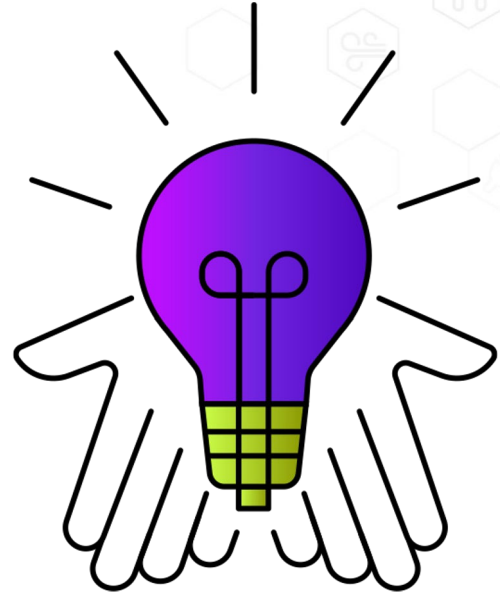
- Technology for technology's sake
- Putting new technologies on top of old technologies



What Digital Transformation is Really About

Digital Transformation **is**:

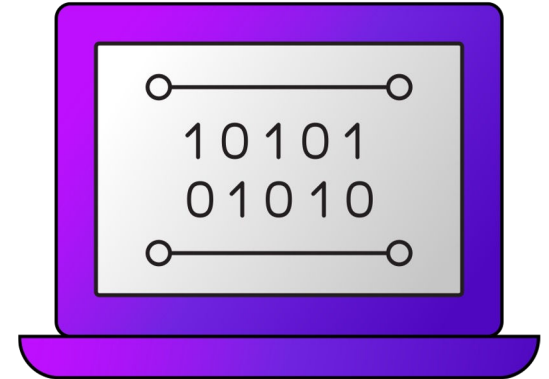
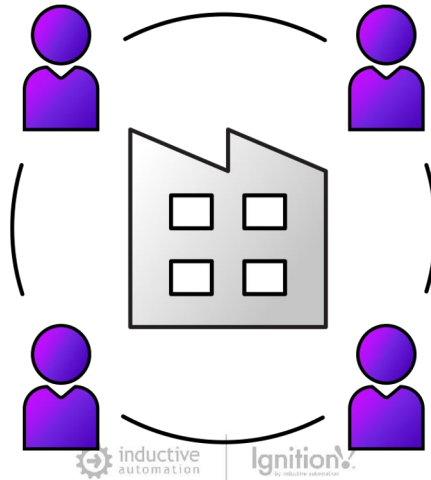
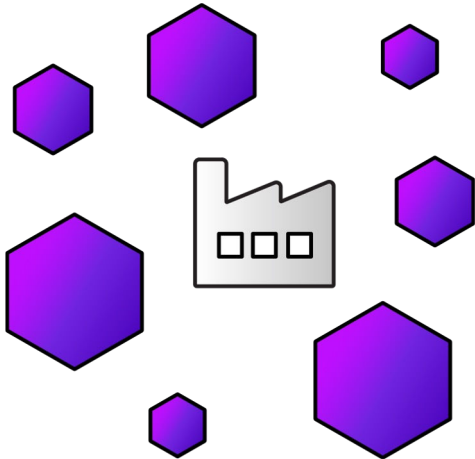
- A comprehensive shift in the way we do business
- About identifying areas of improvement, then making improvements in an intentional, methodical, and measurable way by leveraging modern technologies



What Digital Transformation is Really About

3 key areas:

- Processes
- People
- Programs



What Digital Transformation is Really About

One of the biggest Digital Transformation challenges: How do you make the most of your data?



Data Problem: Stranded Data

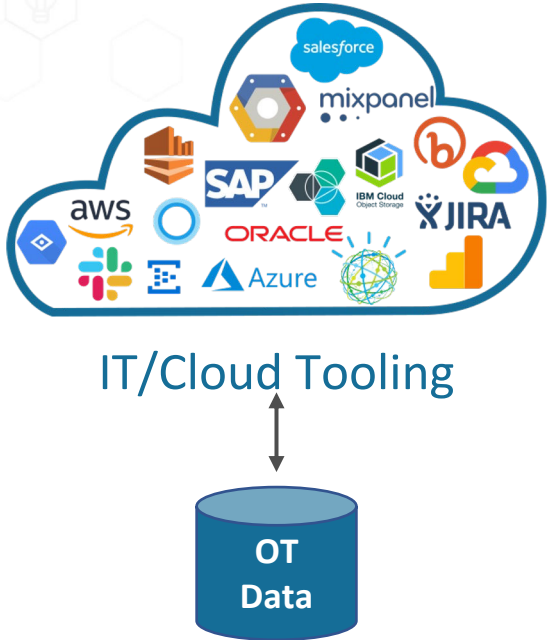
Companies aren't getting the data they need to make better decisions:

- 80% of data is stranded in the field
- Coupling devices with applications stops innovation
- Systems take too much time to set up

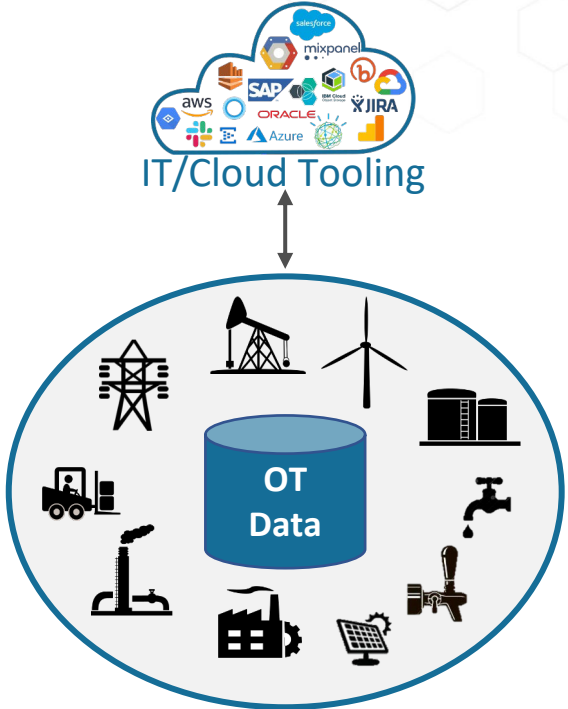


Data Problem: Proposition vs Reality

The Proposition (Looks Simple)



The Reality (It's Difficult)



Data Problem: OT Data vs IT Data

OT Data Consists of:

- Proprietary Protocols
- Multiple Data Formats
- No Contextual Information
- Designed for Operations
- Different Across Market Segments
- Poll/Response Date Retrieval
- Directly Coupled to Applications
- Isolated Networks

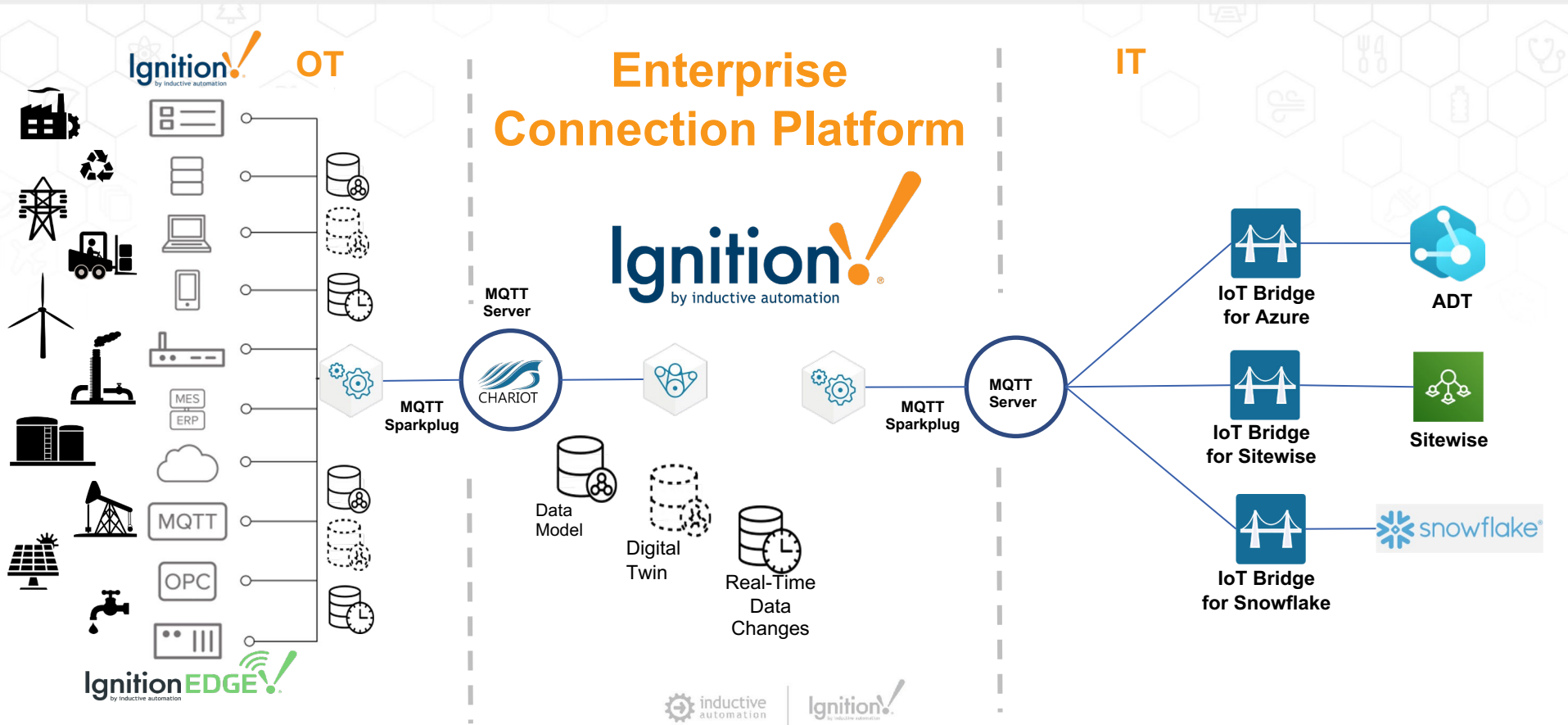
IT Data Needs:

- Data Objects/Modeling
- Standard Data Formats
- Contextual Information
- Decoupled to Enterprise
- Publish/Subscribe Methodology
- Easy to Integrate
- Secure

Ignition Brings OT and IT Together



Example: Applying a Unified Namespace





inductive
automation®

Questions?